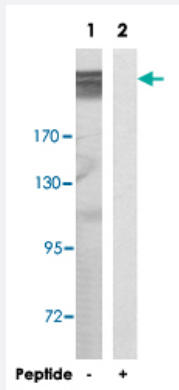


MEGF8 polyclonal antibody

Catalog # PAB17776

Size 100 ug

Applications



Western Blot (Cell lysate)

Western blot analysis of extracts from COLO 205 cells, using MEGF8 polyclonal antibody (Cat # PAB17776).

Peptide "+" means "with peptide blocking".

Specification

Product Description Rabbit polyclonal antibody raised against synthetic peptide of MEGF8.

Immunogen A synthetic peptide corresponding to internal of human MEGF8.

Host Rabbit

Reactivity Human

Specificity This antibody detects endogenous levels of total MEGF8 protein.

Form Liquid

Recommend Usage Western Blot (1:500-1:1000)
ELISA (1:20000)
The optimal working dilution should be determined by the end user.

Storage Buffer In PBS, pH 7.4 (150mM NaCl, 0.02% sodium azide, 50% glycerol)

Storage Instruction Store at -20°C.
Aliquot to avoid repeated freezing and thawing.

Note

This product contains sodium azide: a POISONOUS AND HAZARDOUS SUBSTANCE which should be handled by trained staff only.

Applications

- Western Blot (Cell lysate)

Western blot analysis of extracts from COLO 205 cells, using MEGF8 polyclonal antibody (Cat # PAB17776).
Peptide "+" means "with peptide blocking".

- Enzyme-linked Immunoabsorbent Assay

Gene Info — MEGF8

Entrez GeneID	1954
Protein Accession#	Q7Z7M0
Gene Name	MEGF8
Gene Alias	C19orf49, EGFL4, FLJ22365, MGC120684, MGC138147, SBP1
Gene Description	multiple EGF-like-domains 8
Omim ID	604267
Gene Ontology	Hyperlink
Gene Summary	multiple 4 HBV pre-s2 binding protein 1 Putative uncharacterized protein C19orf49 multiple EGF-like domain protein 4 multiple epidermal growth factor-like domains 8
Other Designations	EGF-like domain-containing protein 4 EGF-like-domain, multiple 4 HBV pre-s2 binding protein 1 Putative uncharacterized protein C19orf49 multiple EGF-like domain protein 4 multiple epidermal growth factor-like domains 8