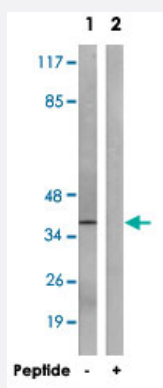


SLC16A13 polyclonal antibody

Catalog # PAB17773 Size 100 ug

Applications



Western Blot (Cell lysate)

Western blot analysis of extracts from NIH/3T3 cells, using SLC16A13 polyclonal antibody (Cat # PAB17773).

Peptide "+" means "with peptide blocking".

Specification

Product Description Rabbit polyclonal antibody raised against synthetic peptide of SLC16A13.

Immunogen A synthetic peptide corresponding to C-terminus of human SLC16A13.

Host Rabbit

Reactivity Human

Specificity This antibody detects endogenous levels of total SLC16A13 protein.

Form Liquid

Recommend Usage Western Blot (1:500-1:1000)
ELISA (1:5000)
The optimal working dilution should be determined by the end user.

Storage Buffer In PBS, pH 7.4 (150mM NaCl, 0.02% sodium azide, 50% glycerol)

Storage Instruction Store at -20°C.
Aliquot to avoid repeated freezing and thawing.

Note

This product contains sodium azide: a POISONOUS AND HAZARDOUS SUBSTANCE which should be handled by trained staff only.

Applications

- Western Blot (Cell lysate)

Western blot analysis of extracts from NIH/3T3 cells, using SLC16A13 polyclonal antibody (Cat # PAB17773).
Peptide "+" means "with peptide blocking".

- Enzyme-linked Immunoabsorbent Assay

Gene Info — SLC16A13

Entrez GeneID	201232
Protein Accession#	Q7RTY0
Gene Name	SLC16A13
Gene Alias	MCT13
Gene Description	solute carrier family 16, member 13 (monocarboxylic acid transporter 13)
Gene Ontology	Hyperlink
Gene Summary	O
Other Designations	OTTHUMP00000128282 monocarboxylate transporter 13 solute carrier family 16 (monocarboxylic acid transporters), member 13