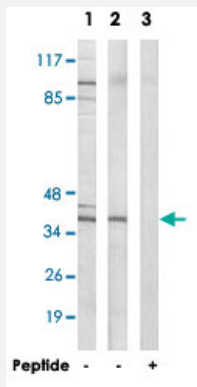


# MRPL39 polyclonal antibody

Catalog # PAB17770

Size 100 ug

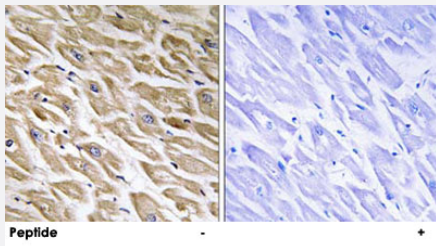
## Applications



### Western Blot (Cell lysate)

Western blot analysis of extracts from MCF-7 cells and Jurkat cells, using MRPL39 polyclonal antibody (Cat # PAB17770).

Peptide "+" means "with peptide blocking".



### Immunohistochemistry (Formalin/PFA-fixed paraffin-embedded sections)

Immunohistochemistry analysis of paraffin-embedded human heart tissue using MRPL39 polyclonal antibody (Cat # PAB17770).

Peptide "+" means "with peptide blocking".

## Specification

Product Description	Rabbit polyclonal antibody raised against synthetic peptide of MRPL39.
Immunogen	A synthetic peptide corresponding to internal of human MRPL39.
Host	Rabbit
Reactivity	Human, Mouse
Specificity	This antibody detects endogenous levels of total MRPL39 protein.
Form	Liquid

<b>Recommend Usage</b>	Western Blot (1:500-1:1000) Immunohistochemistry (1:50-1:100) ELISA (1:40000) The optimal working dilution should be determined by the end user.
<b>Storage Buffer</b>	In PBS, pH 7.4 (150mM NaCl, 0.02% sodium azide, 50% glycerol)
<b>Storage Instruction</b>	Store at -20°C. Aliquot to avoid repeated freezing and thawing.
<b>Note</b>	This product contains sodium azide: a POISONOUS AND HAZARDOUS SUBSTANCE which should be handled by trained staff only.

## Applications

- Western Blot (Cell lysate)

Western blot analysis of extracts from MCF-7 cells and Jurkat cells, using MRPL39 polyclonal antibody (Cat # PAB17770).  
Peptide "+" means "with peptide blocking".

- Immunohistochemistry (Formalin/PFA-fixed paraffin-embedded sections)

Immunohistochemistry analysis of paraffin-embedded human heart tissue using MRPL39 polyclonal antibody (Cat # PAB17770).  
Peptide "+" means "with peptide blocking".

- Enzyme-linked Immunoabsorbent Assay

## Gene Info — MRPL39

<b>Entrez GeneID</b>	<a href="#">54148</a>
<b>Protein Accession#</b>	<a href="#">Q9NYK5</a>
<b>Gene Name</b>	MRPL39
<b>Gene Alias</b>	C21orf92, FLJ20451, L39mt, MGC104174, MGC3400, MRP-L5, MRPL5, MSTP003, PRED22, PRED66, RPML5
<b>Gene Description</b>	mitochondrial ribosomal protein L39
<b>Gene Ontology</b>	<a href="#">Hyperlink</a>

**Gene Summary**

Mammalian mitochondrial ribosomal proteins are encoded by nuclear genes and help in protein synthesis within the mitochondrion. Mitochondrial ribosomes (mitoribosomes) consist of a small 28S subunit and a large 39S subunit. They have an estimated 75% protein to rRNA composition compared to prokaryotic ribosomes, where this ratio is reversed. Another difference between mammalian mitoribosomes and prokaryotic ribosomes is that the latter contain a 5S rRNA. Among different species, the proteins comprising the mitoribosome differ greatly in sequence, and sometimes in biochemical properties, which prevents easy recognition by sequence homology. This gene encodes a 39S subunit protein. Two transcript variants encoding distinct isoforms have been described. A pseudogene corresponding to this gene is found on chromosome 5q. [provided by RefSeq]

**Other Designations**

-