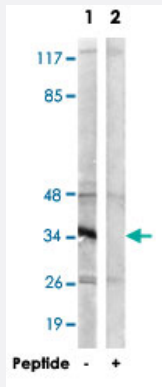


SLC25A21 polyclonal antibody

Catalog # PAB17768

Size 100 ug

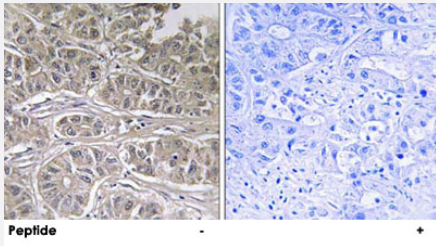
Applications



Western Blot (Cell lysate)

Western blot analysis of extracts from HepG2 cells, using SLC25A21 polyclonal antibody (Cat # PAB17768).

Peptide "+" means "with peptide blocking".



Immunohistochemistry (Formalin/PFA-fixed paraffin-embedded sections)

Immunohistochemistry analysis of paraffin-embedded human liver carcinoma tissue using SLC25A21 polyclonal antibody (Cat # PAB17768).

Peptide "+" means "with peptide blocking".

Specification

Product Description	Rabbit polyclonal antibody raised against synthetic peptide of SLC25A21.
Immunogen	A synthetic peptide corresponding to internal of human SLC25A21.
Host	Rabbit
Reactivity	Human, Mouse, Rat
Specificity	This antibody detects endogenous levels of total SLC25A21 protein
Form	Liquid

Recommend Usage	Western Blot (1:500-1:1000) Immunohistochemistry (1:50-1:100) ELISA (1:40000) The optimal working dilution should be determined by the end user.
Storage Buffer	In PBS, pH 7.4 (150mM NaCl, 0.02% sodium azide, 50% glycerol)
Storage Instruction	Store at -20°C. Aliquot to avoid repeated freezing and thawing.
Note	This product contains sodium azide: a POISONOUS AND HAZARDOUS SUBSTANCE which should be handled by trained staff only.

Applications

- Western Blot (Cell lysate)

Western blot analysis of extracts from HepG2 cells, using SLC25A21 polyclonal antibody (Cat # PAB17768).
Peptide "+" means "with peptide blocking".

- Immunohistochemistry (Formalin/PFA-fixed paraffin-embedded sections)

Immunohistochemistry analysis of paraffin-embedded human liver carcinoma tissue using SLC25A21 polyclonal antibody (Cat # PAB17768).
Peptide "+" means "with peptide blocking".

- Enzyme-linked Immunoabsorbent Assay

Gene Info — SLC25A21

Entrez GeneID	89874
Protein Accession#	Q9BQT8
Gene Name	SLC25A21
Gene Alias	MGC126570, ODC, ODC1
Gene Description	solute carrier family 25 (mitochondrial oxodicarboxylate carrier), member 21
Omim ID	607571
Gene Ontology	Hyperlink

Gene Summary

SLC25A21 is a homolog of the *S. cerevisiae* ODC proteins, mitochondrial carriers that transport C5-C7 oxodicarboxylates across inner mitochondrial membranes. One of the species transported by ODC is 2-oxoadipate, a common intermediate in the catabolism of lysine, tryptophan, and hydroxylysine in mammals. Within mitochondria, 2-oxoadipate is converted into acetyl-CoA.[supplied by OMIM]

Other Designations

oxodicarboxylate carrier

Disease

- [Cardiovascular Diseases](#)
- [Celiac Disease](#)
- [Diabetes Mellitus](#)
- [Edema](#)
- [Genetic Predisposition to Disease](#)
- [Tobacco Use Disorder](#)