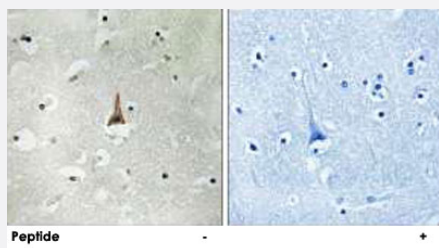


LRP10 polyclonal antibody

Catalog # PAB17761 Size 100 ug

Applications



Immunohistochemistry (Formalin/PFA-fixed paraffin-embedded sections)

Immunohistochemistry analysis of paraffin-embedded human brain tissue using LRP10 polyclonal antibody (Cat # PAB17761).

Peptide "+" means "with peptide blocking".

Specification

Product Description Rabbit polyclonal antibody raised against synthetic peptide of LRP10.

Immunogen A synthetic peptide corresponding to internal of human LRP10.

Host Rabbit

Reactivity Human, Mouse, Rat

Specificity This antibody detects endogenous levels of total LRP10 protein.

Form Liquid

Recommend Usage Immunohistochemistry (1:50-1:100)
ELISA (1:10000)
The optimal working dilution should be determined by the end user.

Storage Buffer In PBS, pH 7.4 (150mM NaCl, 0.02% sodium azide, 50% glycerol)

Storage Instruction Store at -20°C.
Aliquot to avoid repeated freezing and thawing.

Note This product contains sodium azide: a POISONOUS AND HAZARDOUS SUBSTANCE which should be handled by trained staff only.

Applications

- Immunohistochemistry (Formalin/PFA-fixed paraffin-embedded sections)

Immunohistochemistry analysis of paraffin-embedded human brain tissue using LRP10 polyclonal antibody (Cat # PAB17761).
Peptide "+" means "with peptide blocking".

- Enzyme-linked Immunoabsorbent Assay

Gene Info — LRP10

Entrez GeneID	26020
---------------	-----------------------

Protein Accession#	Q7Z4F1
--------------------	------------------------

Gene Name	LRP10
-----------	-------

Gene Alias	DKFZp564C1940, LRP9, MGC142274, MGC142276, MGC8675, MST087, MSTP087
------------	---

Gene Description	low density lipoprotein receptor-related protein 10
------------------	---

Omim ID	609921
---------	------------------------

Gene Ontology	Hyperlink
---------------	---------------------------

Other Designations	-
--------------------	---

Publication Reference

- [LDLR-related protein 10 \(LRP10\) regulates amyloid precursor protein \(APP\) trafficking and processing: evidence for a role in Alzheimer's disease.](#)

Brodeur J, Thériault C, Lessard-Beaudoin M, Marcil A, Dahan S, Lavoie C.

Molecular Neurodegeneration 2012 Jun; 7(1):31.

Application: WB, Human, SH-SY5Y cells