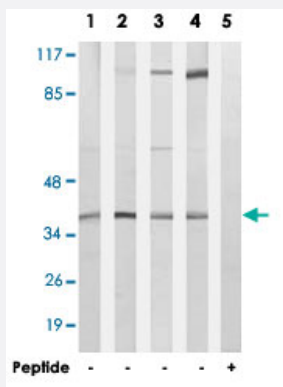


HOXB2 polyclonal antibody

Catalog # PAB17749 Size 100 ug

Applications



Western Blot (Cell lysate)

Western blot analysis of extracts from LoVo cells (Lane 1 and lane 5), A-549 cells (Lane 2), HUVEC cells (Lane 3) and MCF-7 cells (Lane 4), using HOXB2 polyclonal antibody (Cat # PAB17749).

Peptide "+" means "with peptide blocking".

Specification

Product Description Rabbit polyclonal antibody raised against synthetic peptide of HOXB2.

Immunogen A synthetic peptide corresponding to internal of human HOXB2.

Host Rabbit

Reactivity Human

Specificity This antibody detects endogenous levels of total HOXB2 protein.

Form Liquid

Recommend Usage Western Blot (1:500-1:1000)
ELISA (1:20000)
The optimal working dilution should be determined by the end user.

Storage Buffer In PBS, pH 7.4 (150mM NaCl, 0.02% sodium azide, 50% glycerol)

Storage Instruction Store at -20°C.
Aliquot to avoid repeated freezing and thawing.

Note

This product contains sodium azide: a POISONOUS AND HAZARDOUS SUBSTANCE which should be handled by trained staff only.

Applications

- Western Blot (Cell lysate)

Western blot analysis of extracts from LoVo cells (Lane 1 and lane 5), A-549 cells (Lane 2), HUVEC cells (Lane 3) and MCF-7 cells (Lane 4), using HOXB2 polyclonal antibody (Cat # PAB17749).

Peptide "+" means "with peptide blocking".

- Enzyme-linked Immunoabsorbent Assay

Gene Info — HOXB2

Entrez GeneID	3212
Protein Accession#	P14652
Gene Name	HOXB2
Gene Alias	HOX2, HOX2H, Hox-2.8, K8
Gene Description	homeobox B2
Omim ID	142967
Gene Ontology	Hyperlink
Gene Summary	This gene is a member of the Antp homeobox family and encodes a nuclear protein with a homeo box DNA-binding domain. It is included in a cluster of homeobox B genes located on chromosome 17. The encoded protein functions as a sequence-specific transcription factor that is involved in development. Increased expression of this gene is associated with pancreatic cancer. [provided by RefSeq]
Other Designations	K8 home protein homeo box 2H homeo box B2

Disease

- [Genetic Predisposition to Disease](#)
- [Ovarian Neoplasms](#)