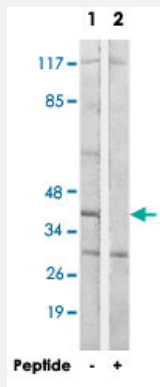


HLA-H polyclonal antibody

Catalog # PAB17747

Size 100 ug

Applications



Western Blot (Cell lysate)

Western blot analysis of extracts from LoVo cells, using HLA-H polyclonal antibody (Cat # PAB17747).

Peptide "+" means "with peptide blocking".

Specification

Product Description	Rabbit polyclonal antibody raised against synthetic peptide of HLA-H.
Immunogen	A synthetic peptide corresponding to internal of human HLA-H.
Host	Rabbit
Reactivity	Human
Specificity	This antibody detects endogenous levels of total HLA-H protein.
Form	Liquid
Recommend Usage	Western Blot (1:500-1:1000) ELISA (1:10000) The optimal working dilution should be determined by the end user.
Storage Buffer	In PBS, pH 7.4 (150mM NaCl, 0.02% sodium azide, 50% glycerol)
Storage Instruction	Store at -20°C. Aliquot to avoid repeated freezing and thawing.

Note

This product contains sodium azide: a POISONOUS AND HAZARDOUS SUBSTANCE which should be handled by trained staff only.

Applications

- Western Blot (Cell lysate)

Western blot analysis of extracts from LoVo cells, using HLA-H polyclonal antibody (Cat # PAB17747).
Peptide "+" means "with peptide blocking".

- Enzyme-linked Immunoabsorbent Assay

Gene Info — HLA-H

Entrez GeneID	3136
---------------	----------------------

Protein Accession#	P01893
--------------------	------------------------

Gene Name	HLA-H
-----------	-------

Gene Alias	HLAHP
------------	-------

Gene Description	major histocompatibility complex, class I, H (pseudogene)
------------------	---

Gene Ontology	Hyperlink
---------------	---------------------------

Gene Summary	class I
--------------	---------

Other Designations	-
--------------------	---

Disease

- [Graft vs Host Disease](#)
- [Hematologic Neoplasms](#)
- [Neoplasm Recurrence](#)