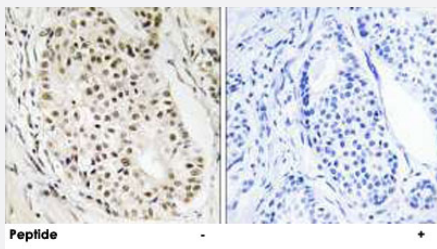


HNRNPUL2 polyclonal antibody

Catalog # PAB17746

Size 100 ug

Applications



Immunohistochemistry (Formalin/PFA-fixed paraffin-embedded sections)

Immunohistochemistry analysis of paraffin-embedded human breast carcinoma tissue using HNRNPUL2 polyclonal antibody (Cat # PAB17746).

Peptide "+" means "with peptide blocking".

Specification

Product Description	Rabbit polyclonal antibody raised against synthetic peptide of HNRNPUL2.
Immunogen	A synthetic peptide corresponding to internal of human HNRNPUL2.
Host	Rabbit
Reactivity	Human, Mouse
Specificity	This antibody detects endogenous levels of total HNRNPUL2 protein
Form	Liquid
Recommend Usage	Immunohistochemistry (1:50-1:100) ELISA (1:40000) The optimal working dilution should be determined by the end user.
Storage Buffer	In PBS, pH 7.4 (150mM NaCl, 0.02% sodium azide, 50% glycerol)
Storage Instruction	Store at -20°C. Aliquot to avoid repeated freezing and thawing.
Note	This product contains sodium azide: a POISONOUS AND HAZARDOUS SUBSTANCE which should be handled by trained staff only.

Applications

- Immunohistochemistry (Formalin/PFA-fixed paraffin-embedded sections)

Immunohistochemistry analysis of paraffin-embedded human breast carcinoma tissue using HNRNPUL2 polyclonal antibody (Cat # PAB17746).

Peptide "+" means "with peptide blocking".

- Enzyme-linked Immunoabsorbent Assay

Gene Info — HNRNPUL2

Entrez GeneID	221092
Protein Accession#	Q1KMD3
Gene Name	HNRNPUL2
Gene Alias	DKFZp762N1910, HNRPUL2
Gene Description	heterogeneous nuclear ribonucleoprotein U-like 2
Gene Ontology	Hyperlink
Other Designations	-