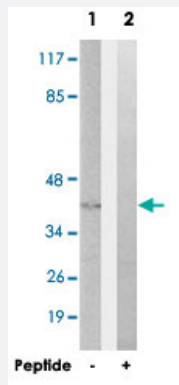


GNAT2 polyclonal antibody

Catalog # PAB17741

Size 100 ug

Applications



Western Blot (Cell lysate)

Western blot analysis of extracts from COLO 205 cells, using GNAT2 polyclonal antibody (Cat # PAB17741).

Peptide "+" means "with peptide blocking".

Specification

Product Description	Rabbit polyclonal antibody raised against synthetic peptide of GNAT2.
Immunogen	A synthetic peptide corresponding to internal of human GNAT2.
Host	Rabbit
Reactivity	Human, Mouse
Specificity	This antibody detects endogenous levels of total GNAT2 protein.
Form	Liquid
Recommend Usage	Western Blot (1:500-1:1000) ELISA (1:10000) The optimal working dilution should be determined by the end user.
Storage Buffer	In PBS, pH 7.4 (150mM NaCl, 0.02% sodium azide, 50% glycerol)
Storage Instruction	Store at -20°C. Aliquot to avoid repeated freezing and thawing.

Note

This product contains sodium azide: a POISONOUS AND HAZARDOUS SUBSTANCE which should be handled by trained staff only.

Applications

- Western Blot (Cell lysate)

Western blot analysis of extracts from COLO 205 cells, using GNAT2 polyclonal antibody (Cat # PAB17741).
Peptide "+" means "with peptide blocking".

- Enzyme-linked Immunoabsorbent Assay

Gene Info — GNAT2

Entrez GeneID [2780](#)

Protein Accession# [P19087](#)

Gene Name GNAT2

Gene Alias ACHM4, GNATC

Gene Description guanine nucleotide binding protein (G protein), alpha transducing activity polypeptide 2

Omim ID [139340](#)

Gene Ontology [Hyperlink](#)

Gene Summary Transducin is a 3-subunit guanine nucleotide-binding protein (G protein) which stimulates the coupling of rhodopsin and cGMP-phosphodiesterase during visual impulses. The transducin alpha subunits in rods and cones are encoded by separate genes. This gene encodes the alpha subunit in cones. [provided by RefSeq]

Other Designations OTTHUMP00000013354|cone-type transducin alpha subunit|guanine nucleotide binding protein, alpha transducing activity polypeptide 2|guanine nucleotide-binding protein G(t), alpha-2 subunit|transducin alpha-2 chain|transducin, cone-specific, alpha polypeptide

Disease

- [Color Vision](#)
- [Color Vision Defects](#)
- [Retinal Degeneration](#)