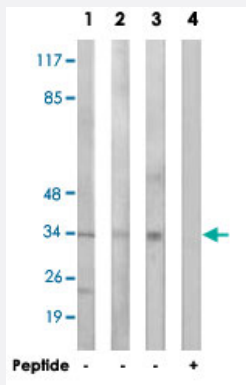


RRAD polyclonal antibody

Catalog # PAB17740 Size 100 ug

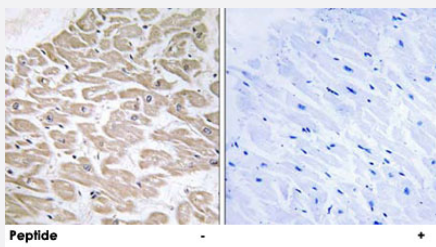
Applications



Western Blot (Cell lysate)

Western blot analysis of extracts from HeLa cells (Lane 1 and lane 4), HepG2 cells (Lane 2) and MCF-7 cells (Lane 3), using RRAD polyclonal antibody (Cat # PAB17740).

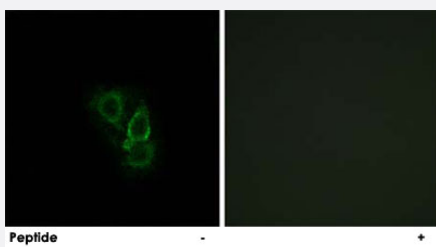
Peptide "+" means "with peptide blocking".



Immunohistochemistry (Formalin/PFA-fixed paraffin-embedded sections)

Immunohistochemistry analysis of paraffin-embedded human heart tissue using RRAD polyclonal antibody (Cat # PAB17740).

Peptide "+" means "with peptide blocking".



Immunofluorescence

Immunofluorescence analysis of A-549 cells, using RRAD polyclonal antibody (Cat # PAB17740).

Peptide "+" means "with peptide blocking".

Specification

Product Description

Rabbit polyclonal antibody raised against synthetic peptide of RRAD.

Immunogen	A synthetic peptide corresponding to internal of human RRAD.
Host	Rabbit
Reactivity	Human, Mouse, Rat
Specificity	This antibody detects endogenous levels of total RRAD protein.
Form	Liquid
Recommend Usage	Western Blot (1:500-1:1000) Immunohistochemistry (1:50-1:100) Immunofluorescence (1:500-1:1000) ELISA (1:20000) The optimal working dilution should be determined by the end user.
Storage Buffer	In PBS, pH 7.4 (150mM NaCl, 0.02% sodium azide, 50% glycerol)
Storage Instruction	Store at -20°C. Aliquot to avoid repeated freezing and thawing.
Note	This product contains sodium azide: a POISONOUS AND HAZARDOUS SUBSTANCE which should be handled by trained staff only.

Applications

- Western Blot (Cell lysate)

Western blot analysis of extracts from HeLa cells (Lane 1 and lane 4), HepG2 cells (Lane 2) and MCF-7 cells (Lane 3), using RRAD polyclonal antibody (Cat # PAB17740).
Peptide "+" means "with peptide blocking".

- Immunohistochemistry (Formalin/PFA-fixed paraffin-embedded sections)

Immunohistochemistry analysis of paraffin-embedded human heart tissue using RRAD polyclonal antibody (Cat # PAB17740).
Peptide "+" means "with peptide blocking".

- Immunofluorescence

Immunofluorescence analysis of A-549 cells, using RRAD polyclonal antibody (Cat # PAB17740).
Peptide "+" means "with peptide blocking".

- Enzyme-linked Immunoabsorbent Assay

Gene Info — RRAD

Entrez GeneID

[6236](#)

Protein Accession#	P55042
Gene Name	RRAD
Gene Alias	RAD, RAD1, REM3
Gene Description	Ras-related associated with diabetes
Omim ID	179503
Gene Ontology	Hyperlink
Other Designations	RAS (RAD and GEM) like GTP binding 3