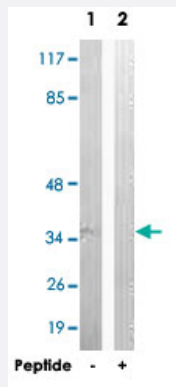


GAS1 polyclonal antibody

Catalog # PAB17738

Size 100 ug

Applications



Western Blot (Cell lysate)

Western blot analysis of extracts from MCF-7 cells, using GAS1 polyclonal antibody (Cat # PAB17738).

Peptide "+" means "with peptide blocking".

Specification

Product Description	Rabbit polyclonal antibody raised against synthetic peptide of GAS1.
Immunogen	A synthetic peptide corresponding to amino acids 241-290 of human GAS1.
Host	Rabbit
Theoretical MW (kDa)	35
Reactivity	Human, Mouse
Specificity	This antibody detects endogenous levels of total GAS1 protein
Form	Liquid
Purification	Affinity chromatography
Recommend Usage	ELISA (1:40000) Western Blot (1:500-1:1000) The optimal working dilution should be determined by the end user.
Storage Buffer	In PBS (without Mg ²⁺ and Ca ²⁺), 150 mM NaCl, pH 7.4 (50% glycerol, 0.02% sodium azide).

Storage Instruction

Store at -20°C.
Aliquot to avoid repeated freezing and thawing.

Note

This product contains sodium azide: a POISONOUS AND HAZARDOUS SUBSTANCE which should be handled by trained staff only.

Applications

- Western Blot (Cell lysate)

Western blot analysis of extracts from MCF-7 cells, using GAS1 polyclonal antibody (Cat # PAB17738).
Peptide "+" means "with peptide blocking".

- Enzyme-linked Immunoabsorbent Assay

Gene Info — GAS1

Entrez GeneID[2619](#)**Protein Accession#**[P54826](#)**Gene Name**

GAS1

Gene Alias

-

Gene Description

growth arrest-specific 1

Omim ID[139185](#)**Gene Ontology**[Hyperlink](#)**Gene Summary**

Growth arrest-specific 1 plays a role in growth suppression. GAS1 blocks entry to S phase and prevents cycling of normal and transformed cells. Gas1 is a putative tumor suppressor gene. [provided by RefSeq]

Other Designations

Growth arrest-specific gene-1|OTTHUMP00000021599

Pathway

- [Hedgehog signaling pathway](#)

Disease

- [Genetic Predisposition to Disease](#)
- [Ovarian Neoplasms](#)