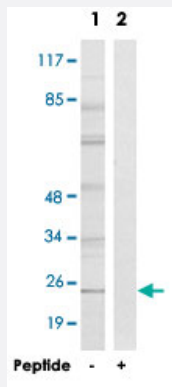


# GJB7 polyclonal antibody

Catalog # PAB17730

Size 100 ug

## Applications



### Western Blot (Cell lysate)

Western blot analysis of extracts from HT-29 cells, using GJB7 polyclonal antibody (Cat # PAB17730).

Peptide "+" means "with peptide blocking".

## Specification

<b>Product Description</b>	Rabbit polyclonal antibody raised against synthetic peptide of GJB7.
<b>Immunogen</b>	A synthetic peptide corresponding to internal of human GJB7.
<b>Host</b>	Rabbit
<b>Reactivity</b>	Human
<b>Specificity</b>	This antibody detects endogenous levels of total GJB7 protein.
<b>Form</b>	Liquid
<b>Recommend Usage</b>	Western Blot (1:500-1:1000) ELISA (1:10000) The optimal working dilution should be determined by the end user.
<b>Storage Buffer</b>	In PBS, pH 7.4 (150mM NaCl, 0.02% sodium azide, 50% glycerol)
<b>Storage Instruction</b>	Store at -20°C. Aliquot to avoid repeated freezing and thawing.

**Note**

This product contains sodium azide: a POISONOUS AND HAZARDOUS SUBSTANCE which should be handled by trained staff only.

## Applications

- Western Blot (Cell lysate)

Western blot analysis of extracts from HT-29 cells, using GJB7 polyclonal antibody (Cat # PAB17730).

Peptide "+" means "with peptide blocking".

- Enzyme-linked Immunoabsorbent Assay

## Gene Info — GJB7

Entrez GeneID	<a href="#">375519</a>
---------------	------------------------

Protein Accession#	<a href="#">Q6PEY0</a>
--------------------	------------------------

Gene Name	GJB7
-----------	------

Gene Alias	CX25, MGC71746, bA136M9.1, connexin25
------------	---------------------------------------

Gene Description	gap junction protein, beta 7, 25kDa
------------------	-------------------------------------

Gene Ontology	<a href="#">Hyperlink</a>
---------------	---------------------------

Gene Summary	Connexins, such as GJB7, are involved in the formation of gap junctions, intercellular conduits that directly connect the cytoplasm of contacting cells. Each gap junction channel is formed by docking of 2 hemichannels, each of which contains 6 connexin subunits (Sohl et al., 2003 [PubMed 12881038]).[supplied by OMIM]
--------------	--

Other Designations	OTTHUMP00000016827 connexin 25
--------------------	--------------------------------