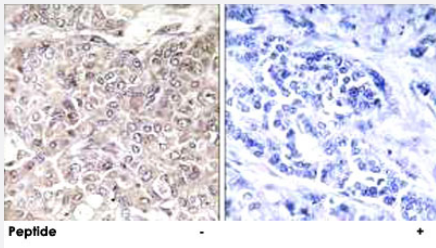


# GPRIN3 polyclonal antibody

Catalog # PAB17725      Size 100 ug

## Applications



### Immunohistochemistry (Formalin/PFA-fixed paraffin-embedded sections)

Immunohistochemistry analysis of paraffin-embedded human breast carcinoma tissue using GPRIN3 polyclonal antibody (Cat # PAB17725).

Peptide "+" means "with peptide blocking".

## Specification

<b>Product Description</b>	Rabbit polyclonal antibody raised against synthetic peptide of GPRIN3.
<b>Immunogen</b>	A synthetic peptide corresponding to internal of human GPRIN3.
<b>Host</b>	Rabbit
<b>Reactivity</b>	Human
<b>Specificity</b>	This antibody detects endogenous levels of total GPRIN3 protein.
<b>Form</b>	Liquid
<b>Recommend Usage</b>	Immunohistochemistry (1:50-1:100) ELISA (1:40000) The optimal working dilution should be determined by the end user.
<b>Storage Buffer</b>	In PBS, pH 7.4 (150mM NaCl, 0.02% sodium azide, 50% glycerol)
<b>Storage Instruction</b>	Store at -20°C. Aliquot to avoid repeated freezing and thawing.
<b>Note</b>	This product contains sodium azide: a POISONOUS AND HAZARDOUS SUBSTANCE which should be handled by trained staff only.

## Applications

- Immunohistochemistry (Formalin/PFA-fixed paraffin-embedded sections)

Immunohistochemistry analysis of paraffin-embedded human breast carcinoma tissue using GPRIN3 polyclonal antibody (Cat # PAB17725).

Peptide "+" means "with peptide blocking".

- Enzyme-linked Immunoabsorbent Assay

## Gene Info — GPRIN3

Entrez GeneID	<a href="#">285513</a>
---------------	------------------------

Protein Accession#	<a href="#">Q6ZVF9</a>
--------------------	------------------------

Gene Name	GPRIN3
-----------	--------

Gene Alias	FLJ42625, GRIN3
------------	-----------------

Gene Description	GPRIN family member 3
------------------	-----------------------

Omim ID	<a href="#">611241</a>
---------	------------------------

Gene Ontology	<a href="#">Hyperlink</a>
---------------	---------------------------

Other Designations	G protein-regulated inducer of neurite outgrowth 3
--------------------	--