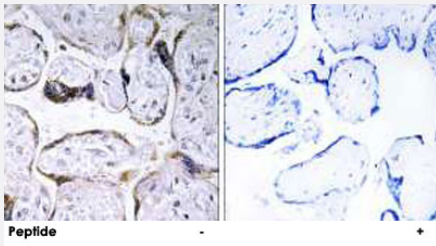


# ELOVL3 polyclonal antibody

Catalog # PAB17713      Size 100 ug

## Applications



### Immunohistochemistry (Formalin/PFA-fixed paraffin-embedded sections)

Immunohistochemistry analysis of paraffin-embedded human placenta tissue using ELOVL3 polyclonal antibody (Cat # PAB17713).

Peptide "+" means "with peptide blocking".

## Specification

<b>Product Description</b>	Rabbit polyclonal antibody raised against synthetic peptide of ELOVL3.
<b>Immunogen</b>	A synthetic peptide corresponding to internal of human ELOVL3.
<b>Host</b>	Rabbit
<b>Reactivity</b>	Human
<b>Specificity</b>	This antibody detects endogenous levels of total ELOVL3 protein.
<b>Form</b>	Liquid
<b>Recommend Usage</b>	Immunohistochemistry (1:50-1:100) ELISA (1:20000) The optimal working dilution should be determined by the end user.
<b>Storage Buffer</b>	In PBS, pH 7.4 (150mM NaCl, 0.02% sodium azide, 50% glycerol)
<b>Storage Instruction</b>	Store at -20°C. Aliquot to avoid repeated freezing and thawing.
<b>Note</b>	This product contains sodium azide: a POISONOUS AND HAZARDOUS SUBSTANCE which should be handled by trained staff only.

## Applications

- Immunohistochemistry (Formalin/PFA-fixed paraffin-embedded sections)

Immunohistochemistry analysis of paraffin-embedded human placenta tissue using ELOVL3 polyclonal antibody (Cat # PAB17713).

Peptide "+" means "with peptide blocking".

- Enzyme-linked Immunoabsorbent Assay

## Gene Info — ELOVL3

Entrez GeneID	<a href="#">83401</a>
Protein Accession#	<a href="#">Q9HB03</a>
Gene Name	ELOVL3
Gene Alias	CIG-30, CIG30, MGC21435
Gene Description	elongation of very long chain fatty acids (FEN1/Elo2, SUR4/Elo3, yeast)-like 3
Gene Ontology	<a href="#">Hyperlink</a>
Gene Summary	ELOVL3 plays a role in fatty acid chain elongation and formation of neutral lipids required for skin barrier function (Westerberg et al., 2004 [PubMed 14581464]).[supplied by OMIM]
Other Designations	OTTHUMP00000020361 elongation of very long chain fatty acids like 3