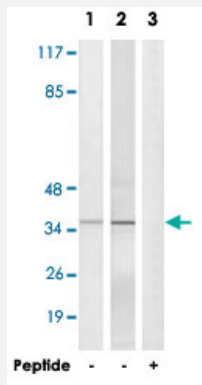


ELOVL1 polyclonal antibody

Catalog # PAB17711

Size 100 ug

Applications



Western Blot (Cell lysate)

Western blot analysis of extracts from HepG2 cells (Lane 1) and Jurkat cells (Lane 2 and lane 3), using ELOVL1 polyclonal antibody (Cat # PAB17711). Peptide "+" means "with peptide blocking".

Specification

Product Description Rabbit polyclonal antibody raised against synthetic peptide of ELOVL1.

Immunogen A synthetic peptide corresponding to internal of human ELOVL1.

Host Rabbit

Reactivity Human, Mouse

Specificity This antibody detects endogenous levels of total ELOVL1 protein.

Form Liquid

Recommend Usage Western Blot (1:500-1:1000)
ELISA (1:40000)
The optimal working dilution should be determined by the end user.

Storage Buffer In PBS, pH 7.4 (150mM NaCl, 0.02% sodium azide, 50% glycerol)

Storage Instruction Store at -20°C.
Aliquot to avoid repeated freezing and thawing.

Note

This product contains sodium azide: a POISONOUS AND HAZARDOUS SUBSTANCE which should be handled by trained staff only.

Applications

- Western Blot (Cell lysate)

Western blot analysis of extracts from HepG2 cells (Lane 1) and Jurkat cells (Lane 2 and lane 3), using ELOVL1 polyclonal antibody (Cat # PAB17711).

Peptide "+" means "with peptide blocking".

- Enzyme-linked Immunoabsorbent Assay

Gene Info — ELOVL1

Entrez GeneID	64834
---------------	-----------------------

Protein Accession#	Q9BW60
--------------------	------------------------

Gene Name	ELOVL1
-----------	--------

Gene Alias	CGI-88, Ssc1
------------	--------------

Gene Description	elongation of very long chain fatty acids (FEN1/Elo2, SUR4/Elo3, yeast)-like 1
------------------	--

Gene Ontology	Hyperlink
---------------	---------------------------

Gene Summary	SUR4/Elo3
--------------	-----------

Other Designations	OTTHUMP00000008574 elongation of very long chain fatty acids-like 1
--------------------	---