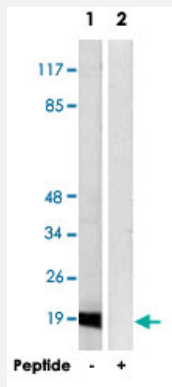


INSL4 polyclonal antibody

Catalog # PAB17709 Size 100 ug

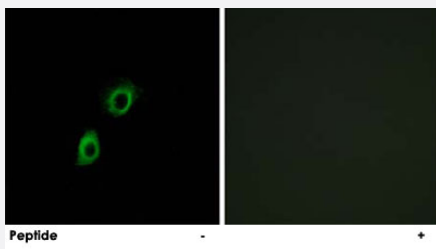
Applications



Western Blot (Cell lysate)

Western blot analysis of extracts from HT-29 cells, using INSL4 polyclonal antibody (Cat # PAB17709).

Peptide "+" means "with peptide blocking".



Immunofluorescence

Immunofluorescence analysis of A-549 cells, using INSL4 polyclonal antibody (Cat # PAB17709).

Peptide "+" means "with peptide blocking".

Specification

Product Description	Rabbit polyclonal antibody raised against synthetic peptide of INSL4.
Immunogen	A synthetic peptide corresponding to internal of human INSL4.
Host	Rabbit
Reactivity	Human
Specificity	This antibody detects endogenous levels of total INSL4 protein.
Form	Liquid

Recommend Usage	Western Blot (1:500-1:1000) Immunofluorescence (1:500-1:1000) ELISA (1:20000) The optimal working dilution should be determined by the end user.
Storage Buffer	In PBS, pH 7.4 (150mM NaCl, 0.02% sodium azide, 50% glycerol)
Storage Instruction	Store at -20°C. Aliquot to avoid repeated freezing and thawing.
Note	This product contains sodium azide: a POISONOUS AND HAZARDOUS SUBSTANCE which should be handled by trained staff only.

Applications

- Western Blot (Cell lysate)

Western blot analysis of extracts from HT-29 cells, using INSL4 polyclonal antibody (Cat # PAB17709).
Peptide "+" means "with peptide blocking".

- Immunofluorescence

Immunofluorescence analysis of A-549 cells, using INSL4 polyclonal antibody (Cat # PAB17709).
Peptide "+" means "with peptide blocking".

- Enzyme-linked Immunoabsorbent Assay

Gene Info — INSL4

Entrez GeneID	3641
Protein Accession#	Q14641
Gene Name	INSL4
Gene Alias	EPIL, PLACENTIN
Gene Description	insulin-like 4 (placenta)
Omim ID	600910
Gene Ontology	Hyperlink

Gene Summary

INSL4 encodes the insulin-like 4 protein, a member of the insulin superfamily. INSL4 encodes a precursor that undergoes post-translational cleavage to produce 3 polypeptide chains, A-C, that form tertiary structures composed of either all three chains, or just the A and B chains. Expression of INSL4 products occurs within the early placental cytotrophoblast and syncytiotrophoblast. [provided by RefSeq]

Other Designations

OTTHUMP00000021025|early placenta insulin-like peptide (EPIL)|insulin-like 4