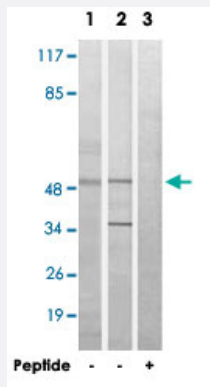


MYLIP polyclonal antibody

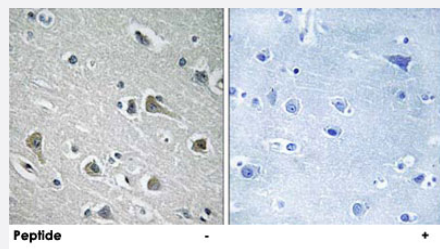
Catalog # PAB17707 Size 100 ug

Applications



Western Blot (Cell lysate)

Western blot analysis of extracts from HeLa cells (Lane 1) and Jurkat cells (Lane 2 and lane 3), using MYLIP polyclonal antibody (Cat # PAB17707). Peptide "+" means "with peptide blocking".



Immunohistochemistry (Formalin/PFA-fixed paraffin-embedded sections)

Immunohistochemistry analysis of paraffin-embedded human brain tissue using MYLIP polyclonal antibody (Cat # PAB17707). Peptide "+" means "with peptide blocking".

Specification

Product Description	Rabbit polyclonal antibody raised against synthetic peptide of MYLIP.
Immunogen	A synthetic peptide corresponding to internal of human MYLIP.
Host	Rabbit
Reactivity	Human, Mouse
Specificity	This antibody detects endogenous levels of total MYLIP protein.
Form	Liquid

Recommend Usage	Western Blot (1:500-1:1000) Immunohistochemistry (1:50-1:100) ELISA (1:20000) The optimal working dilution should be determined by the end user.
Storage Buffer	In PBS, pH 7.4 (150mM NaCl, 0.02% sodium azide, 50% glycerol)
Storage Instruction	Store at -20°C. Aliquot to avoid repeated freezing and thawing.
Note	This product contains sodium azide: a POISONOUS AND HAZARDOUS SUBSTANCE which should be handled by trained staff only.

Applications

- Western Blot (Cell lysate)

Western blot analysis of extracts from HeLa cells (Lane 1) and Jurkat cells (Lane 2 and lane 3), using MYLIP polyclonal antibody (Cat # PAB17707).

Peptide "+" means "with peptide blocking".

- Immunohistochemistry (Formalin/PFA-fixed paraffin-embedded sections)

Immunohistochemistry analysis of paraffin-embedded human brain tissue using MYLIP polyclonal antibody (Cat # PAB17707).

Peptide "+" means "with peptide blocking".

- Enzyme-linked Immunoabsorbent Assay

Gene Info — MYLIP

Entrez GeneID	29116
Protein Accession#	Q8WY64
Gene Name	MYLIP
Gene Alias	MIR
Gene Description	myosin regulatory light chain interacting protein
Omim ID	610082
Gene Ontology	Hyperlink

Gene Summary

The ERM protein family members ezrin, radixin, and moesin are cytoskeletal effector proteins linking actin to membrane-bound proteins at the cell surface. Myosin regulatory light chain interacting protein (MYLIP) is a novel ERM-like protein that interacts with myosin regulatory light chain and inhibits neurite outgrowth. [provided by RefSeq]

Other Designations

OTTHUMP00000018026|band 4.1 superfamily member BZF1|cellular modulator of immune recognition (c-MIR)

Disease

- [Coronary Artery Disease](#)
- [Genetic Predisposition to Disease](#)
- [Schizophrenia](#)