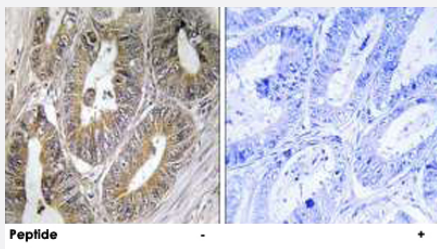


CST2 polyclonal antibody

Catalog # PAB17684 Size 100 ug

Applications



Immunohistochemistry (Formalin/PFA-fixed paraffin-embedded sections)

Immunohistochemistry analysis of paraffin-embedded human colon carcinoma tissue using CST2 polyclonal antibody (Cat # PAB17684).

Peptide "+" means "with peptide blocking".

Specification

Product Description	Rabbit polyclonal antibody raised against synthetic peptide of CST2.
Immunogen	A synthetic peptide corresponding to internal of human CST2.
Host	Rabbit
Reactivity	Human
Specificity	This antibody detects endogenous levels of total CST2 protein.
Form	Liquid
Recommend Usage	Immunohistochemistry (1:50-1:100) ELISA (1:40000) The optimal working dilution should be determined by the end user.
Storage Buffer	In PBS, pH 7.4 (150mM NaCl, 0.02% sodium azide, 50% glycerol)
Storage Instruction	Store at -20°C. Aliquot to avoid repeated freezing and thawing.
Note	This product contains sodium azide: a POISONOUS AND HAZARDOUS SUBSTANCE which should be handled by trained staff only.

Applications

- Immunohistochemistry (Formalin/PFA-fixed paraffin-embedded sections)

Immunohistochemistry analysis of paraffin-embedded human colon carcinoma tissue using CST2 polyclonal antibody (Cat # PAB17684).

Peptide "+" means "with peptide blocking".

- Enzyme-linked Immunoabsorbent Assay

Gene Info — CST2

Entrez GeneID [1470](#)

Protein Accession# [P09228](#)

Gene Name CST2

Gene Alias MGC71924

Gene Description cystatin SA

Omim ID [123856](#)

Gene Ontology [Hyperlink](#)

Gene Summary

The cystatin superfamily encompasses proteins that contain multiple cystatin-like sequences. Some of the members are active cysteine protease inhibitors, while others have lost or perhaps never acquired this inhibitory activity. There are three inhibitory families in the superfamily, including the type 1 cystatins (stefins), type 2 cystatins and the kininogens. The type 2 cystatin proteins are a class of cysteine proteinase inhibitors found in a variety of human fluids and secretions, where they appear to provide protective functions. The cystatin locus on chromosome 20 contains the majority of the type 2 cystatin genes and pseudogenes. This gene is located in the cystatin locus and encodes a secreted thiol protease inhibitor found at high levels in saliva, tears and seminal plasma. [provided by RefSeq]

Other Designations OTTHUMP00000030445|cystatin 2|cystatin S5|cysteine-proteinase inhibitor|salivary cysteine (thiol) protease inhibitor

Disease

- [Cerebral Hemorrhage](#)
- [Genetic Predisposition to Disease](#)

- [Hypertension](#)
- [Intracranial Hemorrhages](#)
- [Stroke](#)
- [Subarachnoid Hemorrhage](#)