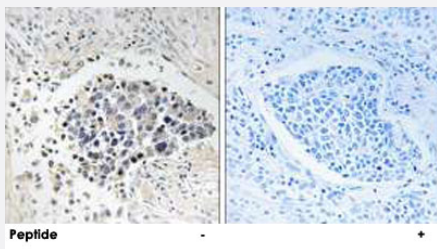


CPNE8 polyclonal antibody

Catalog # PAB17679 Size 100 ug

Applications



Immunohistochemistry (Formalin/PFA-fixed paraffin-embedded sections)

Immunohistochemistry analysis of paraffin-embedded human lung carcinoma tissue using CPNE8 polyclonal antibody (Cat # PAB17679).

Peptide "+" means "with peptide blocking".

Specification

Product Description	Rabbit polyclonal antibody raised against synthetic peptide of CPNE8.
Immunogen	A synthetic peptide corresponding to internal of human CPNE8.
Host	Rabbit
Reactivity	Human, Mouse, Rat
Specificity	This antibody detects endogenous levels of total CPNE8 protein
Form	Liquid
Recommend Usage	Immunohistochemistry (1:50-1:100) ELISA (1:40000) The optimal working dilution should be determined by the end user.
Storage Buffer	In PBS, pH 7.4 (150mM NaCl, 0.02% sodium azide, 50% glycerol)
Storage Instruction	Store at -20°C. Aliquot to avoid repeated freezing and thawing.
Note	This product contains sodium azide: a POISONOUS AND HAZARDOUS SUBSTANCE which should be handled by trained staff only.

Applications

- Immunohistochemistry (Formalin/PFA-fixed paraffin-embedded sections)

Immunohistochemistry analysis of paraffin-embedded human lung carcinoma tissue using CPNE8 polyclonal antibody (Cat # PAB17679).

Peptide "+" means "with peptide blocking".

- Enzyme-linked Immunoabsorbent Assay

Gene Info — CPNE8

Entrez GeneID	144402
Protein Accession#	Q86YQ8
Gene Name	CPNE8
Gene Alias	MGC129645, MGC129646
Gene Description	copine VIII
Gene Ontology	Hyperlink
Gene Summary	Calcium-dependent membrane-binding proteins may regulate molecular events at the interface of the cell membrane and cytoplasm. This gene is one of several genes that encode a calcium-dependent protein containing two N-terminal type II C2 domains and an integrin A domain-like sequence in the C-terminus. [provided by RefSeq]
Other Designations	-