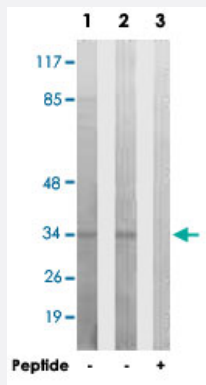


C1QL2 polyclonal antibody

Catalog # PAB17676 Size 100 ug

Applications



Western Blot (Cell lysate)

Western blot analysis of extracts from HUVEC cells (Lane 1) and HeLa cells (Lane 2 and lane 3), using C1QL2 polyclonal antibody (Cat # PAB17676). Peptide "+" means "with peptide blocking".

Specification

| | |
|----------------------------|----------------------------------------------------------------------------------------------------------------------|
| Product Description | Rabbit polyclonal antibody raised against synthetic peptide of C1QL2. |
| Immunogen | A synthetic peptide corresponding to internal of human C1QL2. |
| Host | Rabbit |
| Reactivity | Human, Mouse |
| Specificity | This antibody detects endogenous levels of total C1QL2 protein. |
| Form | Liquid |
| Recommend Usage | Western Blot (1:500-1:1000) ELISA (1:40000) The optimal working dilution should be determined by the end user. |
| Storage Buffer | In PBS, pH 7.4 (150mM NaCl, 0.02% sodium azide, 50% glycerol) |
| Storage Instruction | Store at -20°C. Aliquot to avoid repeated freezing and thawing. |

Note

This product contains sodium azide: a POISONOUS AND HAZARDOUS SUBSTANCE which should be handled by trained staff only.

Applications

- Western Blot (Cell lysate)

Western blot analysis of extracts from HUVEC cells (Lane 1) and HeLa cells (Lane 2 and lane 3), using C1QL2 polyclonal antibody (Cat # PAB17676).

Peptide "+" means "with peptide blocking".

- Enzyme-linked Immunoabsorbent Assay

Gene Info — C1QL2

| | |
|---------------|------------------------|
| Entrez GeneID | 165257 |
|---------------|------------------------|

| | |
|--------------------|------------------------|
| Protein Accession# | Q7Z5L3 |
|--------------------|------------------------|

| | |
|-----------|-------|
| Gene Name | C1QL2 |
|-----------|-------|

| | |
|------------|---|
| Gene Alias | - |
|------------|---|

| | |
|------------------|-----------------------------------------------|
| Gene Description | complement component 1, q subcomponent-like 2 |
|------------------|-----------------------------------------------|

| | |
|---------------|---------------------------|
| Gene Ontology | Hyperlink |
|---------------|---------------------------|

| | |
|--------------|---|
| Gene Summary | O |
|--------------|---|

| | |
|--------------------|----------------------------------------------|
| Other Designations | C1q-domain containing protein gliacolin-like |
|--------------------|----------------------------------------------|