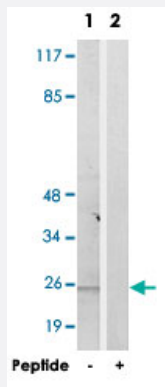


CMTM6 polyclonal antibody

Catalog # PAB17671

Size 100 ug

Applications



Western Blot (Cell lysate)

Western blot analysis of extracts from Raw 264.7 cells, using CMTM6 polyclonal antibody (Cat # PAB17671).

Peptide "+" means "with peptide blocking".

Specification

Product Description	Rabbit polyclonal antibody raised against synthetic peptide of CMTM6.
Immunogen	A synthetic peptide corresponding to internal of human CMTM6.
Host	Rabbit
Reactivity	Human
Specificity	This antibody detects endogenous levels of total CMTM6 protein.
Form	Liquid
Recommend Usage	Western Blot (1:500-1:1000) ELISA (1:5000) The optimal working dilution should be determined by the end user.
Storage Buffer	In PBS, pH 7.4 (150mM NaCl, 0.02% sodium azide, 50% glycerol)
Storage Instruction	Store at -20°C. Aliquot to avoid repeated freezing and thawing.

Note

This product contains sodium azide: a POISONOUS AND HAZARDOUS SUBSTANCE which should be handled by trained staff only.

Applications

- Western Blot (Cell lysate)

Western blot analysis of extracts from Raw 264.7 cells, using CMTM6 polyclonal antibody (Cat # PAB17671).
Peptide "+" means "with peptide blocking".

- Enzyme-linked Immunoabsorbent Assay

Gene Info — CMTM6

Entrez GeneID	54918
---------------	-----------------------

Protein Accession#	Q9NX76
--------------------	------------------------

Gene Name	CMTM6
-----------	-------

Gene Alias	CKLFSF6, FLJ20396, PRO2219
------------	----------------------------

Gene Description	CKLF-like MARVEL transmembrane domain containing 6
------------------	--

Omim ID	607889
---------	------------------------

Gene Ontology	Hyperlink
---------------	---------------------------

Gene Summary	This gene belongs to the chemokine-like factor gene superfamily, a novel family that is similar to the chemokine and transmembrane 4 superfamilies. This gene is one of several chemokine-like factor genes located in a cluster on chromosome 3. This gene is widely expressed in many tissues, but the exact function of the encoded protein is unknown. [provided by RefSeq]
--------------	---

Other Designations	chemokine-like factor super family 6 chemokine-like factor superfamily 6
--------------------	--