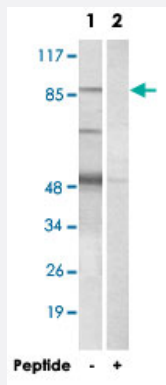


CHPF2 polyclonal antibody

Catalog # PAB17669

Size 100 ug

Applications



Western Blot (Cell lysate)

Western blot analysis of extracts from Jurkat cells, using CHPF2 polyclonal antibody (Cat # PAB17669).

Peptide "+" means "with peptide blocking".

Specification

Product Description	Rabbit polyclonal antibody raised against synthetic peptide of CHPF2.
Immunogen	A synthetic peptide corresponding to internal of human CHPF2.
Host	Rabbit
Reactivity	Human
Specificity	This antibody detects endogenous levels of total CHPF2 protein.
Form	Liquid
Recommend Usage	Western Blot (1:500-1:1000) ELISA (1:40000) The optimal working dilution should be determined by the end user.
Storage Buffer	In PBS, pH 7.4 (150mM NaCl, 0.02% sodium azide, 50% glycerol)
Storage Instruction	Store at -20°C. Aliquot to avoid repeated freezing and thawing.

Note

This product contains sodium azide: a POISONOUS AND HAZARDOUS SUBSTANCE which should be handled by trained staff only.

Applications

- Western Blot (Cell lysate)

Western blot analysis of extracts from Jurkat cells, using CHPF2 polyclonal antibody (Cat # PAB17669).
Peptide "+" means "with peptide blocking".

- Enzyme-linked Immunoabsorbent Assay

Gene Info — CHPF2

Entrez GeneID [54480](#)

Protein Accession# [Q9P2E5](#)

Gene Name CHPF2

Gene Alias ChSy-3, chPF-2, CSGlcAT, CSGLCA-T

Gene Description chondroitin polymerizing factor 2

Omim ID [608037](#)

Gene Ontology [Hyperlink](#)

Other Designations chondroitin synthase-3

Pathway

- [Chondroitin sulfate biosynthesis](#)

- [Metabolic pathways](#)