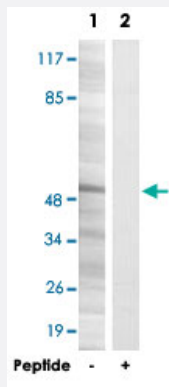


RRP8 polyclonal antibody

Catalog # PAB17665

Size 100 ug

Applications



Western Blot (Cell lysate)

Western blot analysis of extracts from MCF-7 cells, using RRP8 polyclonal antibody (Cat # PAB17665).

Peptide "+" means "with peptide blocking".

Specification

Product Description	Rabbit polyclonal antibody raised against synthetic peptide of RRP8.
Immunogen	A synthetic peptide corresponding to internal of human RRP8.
Host	Rabbit
Reactivity	Human
Specificity	This antibody detects endogenous levels of total RRP8 protein.
Form	Liquid
Recommend Usage	Western Blot (1:500-1:1000) ELISA (1:20000) The optimal working dilution should be determined by the end user.
Storage Buffer	In PBS, pH 7.4 (150mM NaCl, 0.02% sodium azide, 50% glycerol)
Storage Instruction	Store at -20°C. Aliquot to avoid repeated freezing and thawing.

Note

This product contains sodium azide: a POISONOUS AND HAZARDOUS SUBSTANCE which should be handled by trained staff only.

Applications

- Western Blot (Cell lysate)

Western blot analysis of extracts from MCF-7 cells, using RRP8 polyclonal antibody (Cat # PAB17665).
Peptide "+" means "with peptide blocking".

- Enzyme-linked Immunoabsorbent Assay

Gene Info — KIAA0409

Entrez GeneID	23378
---------------	-----------------------

Protein Accession#	O43159
--------------------	------------------------

Gene Name	KIAA0409
-----------	----------

Gene Alias	RRP8
------------	------

Gene Description	KIAA0409
------------------	----------

Gene Ontology	Hyperlink
---------------	---------------------------

Other Designations	RRP8 methyltransferase homolog hypothetical protein LOC23378
--------------------	--