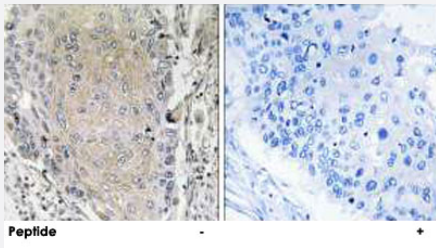


CBLN3 polyclonal antibody

Catalog # PAB17663 Size 100 ug

Applications



Immunohistochemistry (Formalin/PFA-fixed paraffin-embedded sections)

Immunohistochemistry analysis of paraffin-embedded human lung carcinoma tissue using CBLN3 polyclonal antibody (Cat # PAB17663).

Peptide "+" means "with peptide blocking".

Specification

Product Description	Rabbit polyclonal antibody raised against synthetic peptide of CBLN3.
Immunogen	A synthetic peptide corresponding to internal of human CBLN3.
Host	Rabbit
Reactivity	Human, Mouse
Specificity	This antibody detects endogenous levels of total CBLN3 protein.
Form	Liquid
Recommend Usage	Immunohistochemistry (1:50-1:100) ELISA (1:40000) The optimal working dilution should be determined by the end user.
Storage Buffer	In PBS, pH 7.4 (150mM NaCl, 0.02% sodium azide, 50% glycerol)
Storage Instruction	Store at -20°C. Aliquot to avoid repeated freezing and thawing.
Note	This product contains sodium azide: a POISONOUS AND HAZARDOUS SUBSTANCE which should be handled by trained staff only.

Applications

- Immunohistochemistry (Formalin/PFA-fixed paraffin-embedded sections)

Immunohistochemistry analysis of paraffin-embedded human lung carcinoma tissue using CBLN3 polyclonal antibody (Cat # PAB17663).

Peptide "+" means "with peptide blocking".

- Enzyme-linked Immunoabsorbent Assay

Gene Info — CBLN3

Entrez GeneID	643866
Protein Accession#	Q6UW01
Gene Name	CBLN3
Gene Alias	PRO1486
Gene Description	cerebellin 3 precursor
Gene Ontology	Hyperlink
Gene Summary	Members of the precerebellin family, such as CBLN3, contain a cerebellin motif (see CBLN1; MIM 600432) and a C-terminal C1q signature domain (see MIM 120550) that mediates trimeric assembly of atypical collagen complexes. However, precerebellins do not contain a collagen motif, suggesting that they are not conventional components of the extracellular matrix (Pang et al., 2000 [PubMed 10964938]).[supplied by OMIM]
Other Designations	cerebellin 3