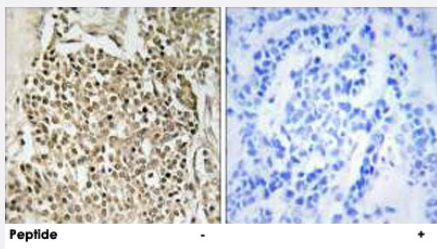


CEP350 polyclonal antibody

Catalog # PAB17661 Size 100 ug

Applications



Immunohistochemistry (Formalin/PFA-fixed paraffin-embedded sections)

Immunohistochemistry analysis of paraffin-embedded human breast carcinoma tissue using CEP350 polyclonal antibody (Cat # PAB17661).

Peptide "+" means "with peptide blocking".

Specification

Product Description Rabbit polyclonal antibody raised against synthetic peptide of CEP350.

Immunogen A synthetic peptide corresponding to internal of human CEP350.

Host Rabbit

Reactivity Human

Specificity This antibody detects endogenous levels of total CEP350 protein.

Form Liquid

Recommend Usage Immunohistochemistry (1:50-1:100)
ELISA (1:40000)
The optimal working dilution should be determined by the end user.

Storage Buffer In PBS, pH 7.4 (150mM NaCl, 0.02% sodium azide, 50% glycerol)

Storage Instruction Store at -20°C.
Aliquot to avoid repeated freezing and thawing.

Note This product contains sodium azide: a POISONOUS AND HAZARDOUS SUBSTANCE which should be handled by trained staff only.

Applications

- Immunohistochemistry (Formalin/PFA-fixed paraffin-embedded sections)

Immunohistochemistry analysis of paraffin-embedded human breast carcinoma tissue using CEP350 polyclonal antibody (Cat # PAB17661).

Peptide "+" means "with peptide blocking".

- Enzyme-linked Immunoabsorbent Assay

Gene Info — CEP350

Entrez GeneID [9857](#)

Protein Accession# [Q5VT06](#)

Gene Name CEP350

Gene Alias CAP350, FLJ38282, FLJ44058, GM133, KIAA0480

Gene Description centrosomal protein 350kDa

Gene Ontology [Hyperlink](#)

Gene Summary The product of this gene is a large protein with a CAP-Gly domain typically found in cytoskeleton-associated proteins. The encoded protein primarily localizes to the centrosome, a non-membranous organelle that functions as the major microtubule-organizing center in animal cells. The encoded protein directly interacts with another large centrosomal protein and is required to anchor microtubules at the centrosome. It is also implicated in the regulation of a class of nuclear hormone receptors in the nucleus. Several alternatively spliced transcript variants have been found, but their full-length nature has not been determined. [provided by RefSeq]

Other Designations OTTHUMP00000060646|centrosome associated protein 350|centrosome-associated protein 350

Disease

- [Tobacco Use Disorder](#)