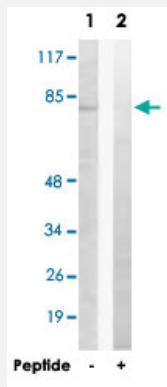


CEP78 polyclonal antibody

Catalog # PAB17660

Size 100 ug

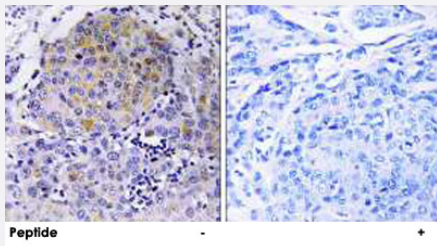
Applications



Western Blot (Cell lysate)

Western blot analysis of extracts from HeLa cells, using CEP78 polyclonal antibody (Cat # PAB17660).

Peptide "+" means "with peptide blocking".



Immunohistochemistry (Formalin/PFA-fixed paraffin-embedded sections)

Immunohistochemistry analysis of paraffin-embedded human breast carcinoma tissue, using CEP78 polyclonal antibody (Cat # PAB17660).

Peptide "+" means "with peptide blocking".

Specification

Product Description	Rabbit polyclonal antibody raised against synthetic peptide of CEP78.
Immunogen	A synthetic peptide corresponding to internal of human CEP78.
Host	Rabbit
Reactivity	Human, Mouse
Specificity	This antibody detects endogenous levels of total CEP78 protein.
Form	Liquid

Recommend Usage	Western Blot (1:500-1:1000) Immunohistochemistry (1:50-1:100) ELISA (1:40000) The optimal working dilution should be determined by the end user.
Storage Buffer	In PBS, pH 7.4 (150mM NaCl, 0.02% sodium azide, 50% glycerol)
Storage Instruction	Store at -20°C. Aliquot to avoid repeated freezing and thawing.
Note	This product contains sodium azide: a POISONOUS AND HAZARDOUS SUBSTANCE which should be handled by trained staff only.

Applications

- Western Blot (Cell lysate)

Western blot analysis of extracts from HeLa cells, using CEP78 polyclonal antibody (Cat # PAB17660).
Peptide "+" means "with peptide blocking".

- Immunohistochemistry (Formalin/PFA-fixed paraffin-embedded sections)

Immunohistochemistry analysis of paraffin-embedded human breast carcinoma tissue, using CEP78 polyclonal antibody (Cat # PAB17660).
Peptide "+" means "with peptide blocking".

- Enzyme-linked Immunoabsorbent Assay

Gene Info — CEP78

Entrez GeneID	84131
Protein Accession#	Q5JTW2
Gene Name	CEP78
Gene Alias	C9orf81, FLJ12643, IP63, MGC135040
Gene Description	centrosomal protein 78kDa
Gene Ontology	Hyperlink
Other Designations	OTTHUMP00000063613