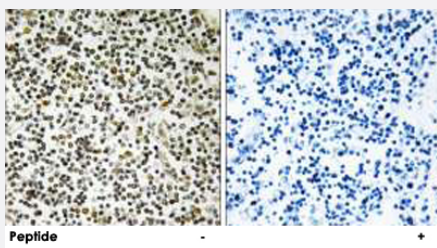


CEP152 polyclonal antibody

Catalog # PAB17655 Size 100 ug

Applications



Immunohistochemistry (Formalin/PFA-fixed paraffin-embedded sections)

Immunohistochemistry analysis of paraffin-embedded human lymph node tissue using CEP152 polyclonal antibody (Cat # PAB17655).

Peptide "+" means "with peptide blocking".

Specification

Product Description Rabbit polyclonal antibody raised against synthetic peptide of CEP152.

Immunogen A synthetic peptide corresponding to internal of human CEP152.

Host Rabbit

Reactivity Human, Mouse

Specificity This antibody detects endogenous levels of total CEP152 protein.

Form Liquid

Recommend Usage Immunohistochemistry (1:50-1:100)
ELISA (1:40000)
The optimal working dilution should be determined by the end user.

Storage Buffer In PBS, pH 7.4 (150mM NaCl, 0.02% sodium azide, 50% glycerol)

Storage Instruction Store at -20°C.
Aliquot to avoid repeated freezing and thawing.

Note This product contains sodium azide: a POISONOUS AND HAZARDOUS SUBSTANCE which should be handled by trained staff only.

Applications

- Immunohistochemistry (Formalin/PFA-fixed paraffin-embedded sections)

Immunohistochemistry analysis of paraffin-embedded human lymph node tissue using CEP152 polyclonal antibody (Cat # PAB17655).

Peptide "+" means "with peptide blocking".

- Enzyme-linked Immunoabsorbent Assay

Gene Info — CEP152

Entrez GeneID	22995
---------------	-----------------------

Protein Accession#	O94986
--------------------	------------------------

Gene Name	CEP152
-----------	--------

Gene Alias	KIAA0912
------------	----------

Gene Description	centrosomal protein 152kDa
------------------	----------------------------

Gene Ontology	Hyperlink
---------------	---------------------------

Other Designations	-
--------------------	---