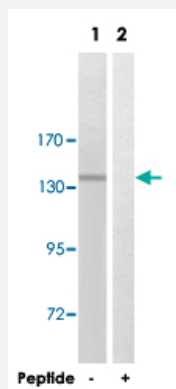


CEP135 polyclonal antibody

Catalog # PAB17654

Size 100 ug

Applications



Western Blot (Cell lysate)

Western blot analysis of extracts from COLO 205 cells, using CEP135 polyclonal antibody (Cat # PAB17654).

Peptide "+" means "with peptide blocking".

Specification

Product Description Rabbit polyclonal antibody raised against synthetic peptide of CEP135.

Immunogen A synthetic peptide corresponding to C-terminus of human CEP135.

Host Rabbit

Reactivity Human, Mouse

Specificity This antibody detects endogenous levels of total CEP135 protein.

Form Liquid

Recommend Usage Western Blot (1:500-1:1000)
ELISA (1:40000)
The optimal working dilution should be determined by the end user.

Storage Buffer In PBS, pH 7.4 (150mM NaCl, 0.02% sodium azide, 50% glycerol)

Storage Instruction Store at -20°C.
Aliquot to avoid repeated freezing and thawing.

Note

This product contains sodium azide: a POISONOUS AND HAZARDOUS SUBSTANCE which should be handled by trained staff only.

Applications

- Western Blot (Cell lysate)

Western blot analysis of extracts from COLO 205 cells, using CEP135 polyclonal antibody (Cat # PAB17654).
Peptide "+" means "with peptide blocking".

- Enzyme-linked Immunoabsorbent Assay

Gene Info — CEP135

Entrez GeneID	9662
---------------	----------------------

Protein Accession#	Q66GS9
--------------------	------------------------

Gene Name	CEP135
-----------	--------

Gene Alias	CEP4, KIAA0635
------------	----------------

Gene Description	centrosomal protein 135kDa
------------------	----------------------------

Omim ID	611423
---------	------------------------

Gene Ontology	Hyperlink
---------------	---------------------------

Other Designations	centrosomal protein 4 centrosome protein 4 centrosome protein cep135
--------------------	--