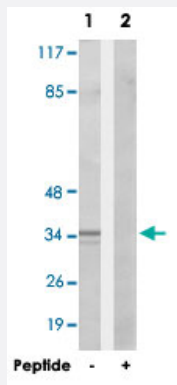


CA13 polyclonal antibody

Catalog # PAB17648

Size 100 ug

Applications



Western Blot (Cell lysate)

Western blot analysis of extracts from HepG2 cells, using CA13 polyclonal antibody (Cat # PAB17648).

Peptide "+" means "with peptide blocking".

Specification

Product Description	Rabbit polyclonal antibody raised against synthetic peptide of CA13.
Immunogen	A synthetic peptide corresponding to internal of human CA13.
Host	Rabbit
Reactivity	Human, Mouse
Specificity	This antibody detects endogenous levels of total CA13 protein.
Form	Liquid
Recommend Usage	Western Blot (1:500-1:1000) ELISA (1:10000) The optimal working dilution should be determined by the end user.
Storage Buffer	In PBS, pH 7.4 (150mM NaCl, 0.02% sodium azide, 50% glycerol)
Storage Instruction	Store at -20°C. Aliquot to avoid repeated freezing and thawing.

Note

This product contains sodium azide: a POISONOUS AND HAZARDOUS SUBSTANCE which should be handled by trained staff only.

Applications

- Western Blot (Cell lysate)

Western blot analysis of extracts from HepG2 cells, using CA13 polyclonal antibody (Cat # PAB17648).
Peptide "+" means "with peptide blocking".

- Enzyme-linked Immunoabsorbent Assay

Gene Info — CA13

Entrez GeneID	377677
Protein Accession#	Q8N1Q1
Gene Name	CA13
Gene Alias	CAXIII, FLJ37995, MGC59868
Gene Description	carbonic anhydrase XIII
Omim ID	611436
Gene Ontology	Hyperlink
Gene Summary	Carbonic anhydrases (CAs) are a family of zinc metalloenzymes. For background information on the CA family, see MIM 114800.[supplied by OMIM]
Other Designations	carbonic anhydrase 13

Pathway

- [Nitrogen metabolism](#)