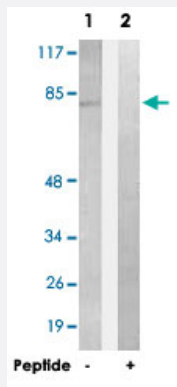


CLIP3 polyclonal antibody

Catalog # PAB17644

Size 100 ug

Applications



Western Blot (Cell lysate)

Western blot analysis of extracts from HeLa cells, using CLIP3 polyclonal antibody (Cat # PAB17644).

Peptide "+" means "with peptide blocking".

Specification

Product Description	Rabbit polyclonal antibody raised against synthetic peptide of CLIP3.
Immunogen	A synthetic peptide corresponding to internal of human CLIP3.
Host	Rabbit
Reactivity	Human, Mouse
Specificity	This antibody detects endogenous levels of total CLIP3 protein.
Form	Liquid
Recommend Usage	Western Blot (1:500-1:1000) Immunofluorescence (1:500-1:1000) ELISA (1:40000) The optimal working dilution should be determined by the end user.
Storage Buffer	In PBS, pH 7.4 (150mM NaCl, 0.02% sodium azide, 50% glycerol)
Storage Instruction	Store at -20°C. Aliquot to avoid repeated freezing and thawing.

Note

This product contains sodium azide: a POISONOUS AND HAZARDOUS SUBSTANCE which should be handled by trained staff only.

Applications

- Western Blot (Cell lysate)

Western blot analysis of extracts from HeLa cells, using CLIP3 polyclonal antibody (Cat # PAB17644).
Peptide "+" means "with peptide blocking".

- Immunofluorescence

- Enzyme-linked Immunoabsorbent Assay

Gene Info — CLIP3

Entrez GeneID	25999
---------------	-----------------------

Protein Accession#	Q96DZ5
--------------------	------------------------

Gene Name	CLIP3
-----------	-------

Gene Alias	CLIPR-59, CLIPR59, DKFZp586N1922, FLJ33413, RSNL1
------------	---------------------------------------------------

Gene Description	CAP-GLY domain containing linker protein 3
------------------	--------------------------------------------

Omim ID	607382
---------	------------------------

Gene Ontology	Hyperlink
---------------	---------------------------

Other Designations	CLIP-170-related protein restin-like 1
--------------------	----------------------------------------