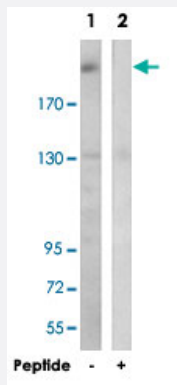


# BRWD3 polyclonal antibody

Catalog # PAB17639      Size 100 ug

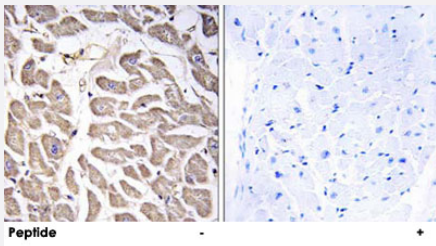
## Applications



### Western Blot (Cell lysate)

Western blot analysis of extracts from COLO 205 cells, using BRWD3 polyclonal antibody (Cat # PAB17639).

Peptide "+" means "with peptide blocking".



### Immunohistochemistry (Formalin/PFA-fixed paraffin-embedded sections)

Immunohistochemistry analysis of paraffin-embedded human heart tissue using BRWD3 polyclonal antibody (Cat # PAB17639).

Peptide "+" means "with peptide blocking".

## Specification

<b>Product Description</b>	Rabbit polyclonal antibody raised against synthetic peptide of BRWD3.
<b>Immunogen</b>	A synthetic peptide corresponding to internal of human BRWD3.
<b>Host</b>	Rabbit
<b>Reactivity</b>	Human, Mouse
<b>Specificity</b>	This antibody detects endogenous levels of total BRWD3 protein.
<b>Form</b>	Liquid

<b>Recommend Usage</b>	Western Blot (1:500-1:1000) Immunohistochemistry (1:50-1:100) ELISA (1:40000) The optimal working dilution should be determined by the end user.
<b>Storage Buffer</b>	In PBS, pH 7.4 (150mM NaCl, 0.02% sodium azide, 50% glycerol)
<b>Storage Instruction</b>	Store at -20°C. Aliquot to avoid repeated freezing and thawing.
<b>Note</b>	This product contains sodium azide: a POISONOUS AND HAZARDOUS SUBSTANCE which should be handled by trained staff only.

## Applications

- Western Blot (Cell lysate)

Western blot analysis of extracts from COLO 205 cells, using BRWD3 polyclonal antibody (Cat # PAB17639).  
Peptide "+" means "with peptide blocking".

- Immunohistochemistry (Formalin/PFA-fixed paraffin-embedded sections)

Immunohistochemistry analysis of paraffin-embedded human heart tissue using BRWD3 polyclonal antibody (Cat # PAB17639).  
Peptide "+" means "with peptide blocking".

- Enzyme-linked Immunoabsorbent Assay

## Gene Info — BRWD3

<b>Entrez GeneID</b>	<a href="#">254065</a>
<b>Protein Accession#</b>	<a href="#">Q6RI45</a>
<b>Gene Name</b>	BRWD3
<b>Gene Alias</b>	BRODL, FLJ38568, MRX93
<b>Gene Description</b>	bromodomain and WD repeat domain containing 3
<b>Omim ID</b>	<a href="#">300553</a> <a href="#">300659</a>
<b>Gene Ontology</b>	<a href="#">Hyperlink</a>
<b>Other Designations</b>	OTTHUMP00000023606 OTTHUMP00000062096 bromo domain-containing protein disrupted in leukemia novel WD repeat domain protein