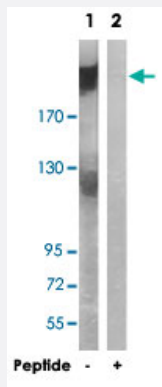


ARFGEF2 polyclonal antibody

Catalog # PAB17638 Size 100 ug

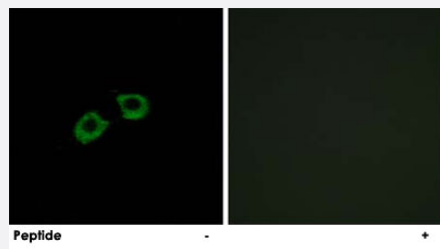
Applications



Western Blot (Cell lysate)

Western blot analysis of extracts from A-549 cells, using ARFGEF2 polyclonal antibody (Cat # PAB17638).

Peptide "+" means "with peptide blocking".



Immunofluorescence

Immunofluorescence analysis of A-549 cells, using ARFGEF2 polyclonal antibody (Cat # PAB17638).

Peptide "+" means "with peptide blocking".

Specification

Product Description	Rabbit polyclonal antibody raised against synthetic peptide of ARFGEF2.
Immunogen	A synthetic peptide corresponding to internal of human ARFGEF2.
Host	Rabbit
Reactivity	Human, Mouse, Rat
Specificity	This antibody detects endogenous levels of total ARFGEF2 protein.
Form	Liquid

Recommend Usage	Western Blot (1:500-1:1000) Immunofluorescence (1:500-1:1000) ELISA (1:20000) The optimal working dilution should be determined by the end user.
Storage Buffer	In PBS, pH 7.4 (150mM NaCl, 0.02% sodium azide, 50% glycerol)
Storage Instruction	Store at -20°C. Aliquot to avoid repeated freezing and thawing.
Note	This product contains sodium azide: a POISONOUS AND HAZARDOUS SUBSTANCE which should be handled by trained staff only.

Applications

- Western Blot (Cell lysate)

Western blot analysis of extracts from A-549 cells, using ARFGEF2 polyclonal antibody (Cat # PAB17638).
Peptide "+" means "with peptide blocking".

- Immunofluorescence

Immunofluorescence analysis of A-549 cells, using ARFGEF2 polyclonal antibody (Cat # PAB17638).
Peptide "+" means "with peptide blocking".

- Enzyme-linked Immunoabsorbent Assay

Gene Info — ARFGEF2

Entrez GeneID	10564
Protein Accession#	Q9Y6D5
Gene Name	ARFGEF2
Gene Alias	BIG2, FLJ23723, dJ1164110.1
Gene Description	ADP-ribosylation factor guanine nucleotide-exchange factor 2 (brefeldin A-inhibited)
Omim ID	605371 608097
Gene Ontology	Hyperlink

Gene Summary

ADP-ribosylation factors (ARFs) play an important role in intracellular vesicular trafficking. The protein encoded by this gene is involved in the activation of ARFs by accelerating replacement of bound GDP with GTP and is involved in Golgi transport. It contains a Sec7 domain, which may be responsible for its guanine-nucleotide exchange activity and also brefeldin A inhibition. [provided by RefSeq]

Other Designations

ADP-ribosylation factor guanine nucleotide-exchange factor 2|OTTHUMP00000031231|brefeldin A-inhibited guanine nucleotide-exchange protein 2