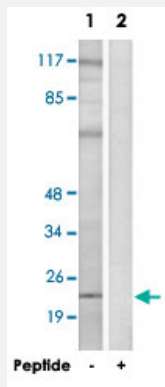


BCAS4 polyclonal antibody

Catalog # PAB17637 Size 100 ug

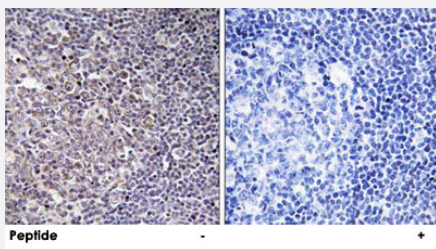
Applications



Western Blot (Cell lysate)

Western blot analysis of extracts from K-562 cells, using BCAS4 polyclonal antibody (Cat # PAB17637).

Peptide "+" means "with peptide blocking".



Immunohistochemistry (Formalin/PFA-fixed paraffin-embedded sections)

Immunohistochemistry analysis of paraffin-embedded human tonsil tissue using BCAS4 polyclonal antibody (Cat # PAB17637).

Peptide "+" means "with peptide blocking".

Specification

| | |
|----------------------------|---|
| Product Description | Rabbit polyclonal antibody raised against synthetic peptide of BCAS4. |
| Immunogen | A synthetic peptide corresponding to internal of human BCAS4. |
| Host | Rabbit |
| Reactivity | Human |
| Specificity | This antibody detects endogenous levels of total BCAS4 protein. |
| Form | Liquid |

| | |
|----------------------------|---|
| Recommend Usage | Western Blot (1:500-1:1000) Immunohistochemistry (1:50-1:100) ELISA (1:20000) The optimal working dilution should be determined by the end user. |
| Storage Buffer | In PBS, pH 7.4 (150mM NaCl, 0.02% sodium azide, 50% glycerol) |
| Storage Instruction | Store at -20°C. Aliquot to avoid repeated freezing and thawing. |
| Note | This product contains sodium azide: a POISONOUS AND HAZARDOUS SUBSTANCE which should be handled by trained staff only. |

Applications

- Western Blot (Cell lysate)

Western blot analysis of extracts from K-562 cells, using BCAS4 polyclonal antibody (Cat # PAB17637).
Peptide "+" means "with peptide blocking".

- Immunohistochemistry (Formalin/PFA-fixed paraffin-embedded sections)

Immunohistochemistry analysis of paraffin-embedded human tonsil tissue using BCAS4 polyclonal antibody (Cat # PAB17637).
Peptide "+" means "with peptide blocking".

- Enzyme-linked Immunoabsorbent Assay

Gene Info — BCAS4

| | |
|---------------------------|---|
| Entrez GeneID | 55653 |
| Protein Accession# | Q8TDM0 |
| Gene Name | BCAS4 |
| Gene Alias | CNOL, FLJ20495 |
| Gene Description | breast carcinoma amplified sequence 4 |
| Omim ID | 607471 |
| Gene Ontology | Hyperlink |
| Other Designations | BCAS4/BCAS3 fusion OTTHUMP00000031272 OTTHUMP00000031273 breast carcinoma amplified sequence 4/3 fusion protein |