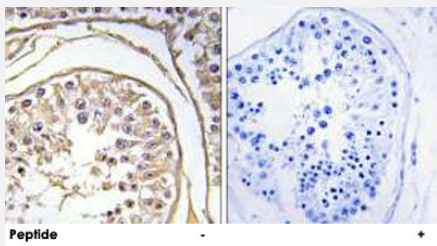


BAGE2 polyclonal antibody

Catalog # PAB17625 Size 100 ug

Applications



Immunohistochemistry (Formalin/PFA-fixed paraffin-embedded sections)

Immunohistochemistry analysis of paraffin-embedded human testis tissue using BAGE2 polyclonal antibody (Cat # PAB17625).

Peptide "+" means "with peptide blocking".

Specification

Product Description Rabbit polyclonal antibody raised against synthetic peptide of BAGE2.

Immunogen A synthetic peptide corresponding to internal of human BAGE2.

Host Rabbit

Reactivity Human

Specificity This antibody detects endogenous levels of total BAGE2 protein.

Form Liquid

Recommend Usage Immunohistochemistry (1:50-1:100)
ELISA (1:40000)
The optimal working dilution should be determined by the end user.

Storage Buffer In PBS, pH 7.4 (150mM NaCl, 0.02% sodium azide, 50% glycerol)

Storage Instruction Store at -20°C.
Aliquot to avoid repeated freezing and thawing.

Note This product contains sodium azide: a POISONOUS AND HAZARDOUS SUBSTANCE which should be handled by trained staff only.

Applications

- Immunohistochemistry (Formalin/PFA-fixed paraffin-embedded sections)

Immunohistochemistry analysis of paraffin-embedded human testis tissue using BAGE2 polyclonal antibody (Cat # PAB17625).
Peptide "+" means "with peptide blocking".

- Enzyme-linked Immunoabsorbent Assay

Gene Info — BAGE2

| | |
|---------------|-----------------------|
| Entrez GeneID | 85319 |
|---------------|-----------------------|

| | |
|--------------------|------------------------|
| Protein Accession# | Q86Y30 |
|--------------------|------------------------|

| | |
|-----------|-------|
| Gene Name | BAGE2 |
|-----------|-------|

| | |
|------------|---|
| Gene Alias | - |
|------------|---|

| | |
|------------------|-------------------------------------|
| Gene Description | B melanoma antigen family, member 2 |
|------------------|-------------------------------------|

| | |
|---------------|---------------------------|
| Gene Ontology | Hyperlink |
|---------------|---------------------------|

| | |
|--------------|---|
| Gene Summary | O |
|--------------|---|

| | |
|--------------------|---|
| Other Designations | - |
|--------------------|---|