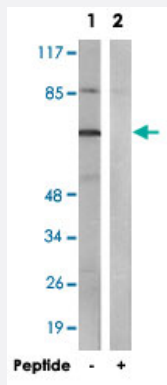


DQX1 polyclonal antibody

Catalog # PAB17624

Size 100 ug

Applications



Western Blot (Cell lysate)

Western blot analysis of extracts from COS-7 cells, using DQX1 polyclonal antibody (Cat # PAB17624).

Peptide "+" means "with peptide blocking".

Specification

Product Description	Rabbit polyclonal antibody raised against synthetic peptide of DQX1.
Immunogen	A synthetic peptide corresponding to internal of human DQX1.
Host	Rabbit
Reactivity	Human, Mouse
Specificity	This antibody detects endogenous levels of total DQX1 protein.
Form	Liquid
Recommend Usage	Western Blot (1:500-1:1000) ELISA (1:20000) The optimal working dilution should be determined by the end user.
Storage Buffer	In PBS, pH 7.4 (150mM NaCl, 0.02% sodium azide, 50% glycerol)
Storage Instruction	Store at -20°C. Aliquot to avoid repeated freezing and thawing.

Note

This product contains sodium azide: a POISONOUS AND HAZARDOUS SUBSTANCE which should be handled by trained staff only.

Applications

- Western Blot (Cell lysate)

Western blot analysis of extracts from COS-7 cells, using DQX1 polyclonal antibody (Cat # PAB17624).
Peptide "+" means "with peptide blocking".

- Enzyme-linked Immunoabsorbent Assay

Gene Info — DQX1

Entrez GeneID	165545
---------------	------------------------

Protein Accession#	Q8TE96
--------------------	------------------------

Gene Name	DQX1
-----------	------

Gene Alias	FLJ23757
------------	----------

Gene Description	DEAQ box polypeptide 1 (RNA-dependent ATPase)
------------------	---

Gene Ontology	Hyperlink
---------------	---------------------------

Other Designations	DEAQ RNA-dependent ATPase DQX1 OTTHUMP00000160425
--------------------	---