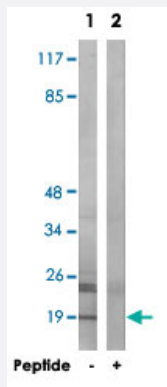


ATP5L2 polyclonal antibody

Catalog # PAB17620 Size 100 ug

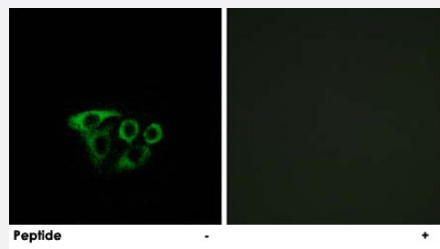
Applications



Western Blot (Cell lysate)

Western blot analysis of extracts from A-549 cells, using ATP5L2 polyclonal antibody (Cat # PAB17620).

Peptide "+" means "with peptide blocking".



Immunofluorescence

Immunofluorescence analysis of A-549 cells, using ATP5L2 polyclonal antibody (Cat # PAB17620).

Peptide "+" means "with peptide blocking".

Specification

Product Description	Rabbit polyclonal antibody raised against synthetic peptide of ATP5L2.
Immunogen	A synthetic peptide corresponding to internal of human ATP5L2.
Host	Rabbit
Reactivity	Human
Specificity	This antibody detects endogenous levels of total ATP5L2 protein.
Form	Liquid

Recommend Usage	Western Blot (1:500-1:1000) Immunofluorescence (1:500-1:1000) ELISA (1:40000) The optimal working dilution should be determined by the end user.
Storage Buffer	In PBS, pH 7.4 (150mM NaCl, 0.02% sodium azide, 50% glycerol)
Storage Instruction	Store at -20°C. Aliquot to avoid repeated freezing and thawing.
Note	This product contains sodium azide: a POISONOUS AND HAZARDOUS SUBSTANCE which should be handled by trained staff only.

Applications

- Western Blot (Cell lysate)

Western blot analysis of extracts from A-549 cells, using ATP5L2 polyclonal antibody (Cat # PAB17620).
Peptide "+" means "with peptide blocking".

- Immunofluorescence

Immunofluorescence analysis of A-549 cells, using ATP5L2 polyclonal antibody (Cat # PAB17620).
Peptide "+" means "with peptide blocking".

- Enzyme-linked Immunoabsorbent Assay

Gene Info — ATP5L2

Entrez GeneID	267020
Protein Accession#	Q7Z4Y8
Gene Name	ATP5L2
Gene Alias	ATP5K2, dJ222E13.5
Gene Description	ATP synthase, H ⁺ transporting, mitochondrial F0 complex, subunit G2 pseudogene
Gene Ontology	Hyperlink
Gene Summary	ATP synthase
Other Designations	-