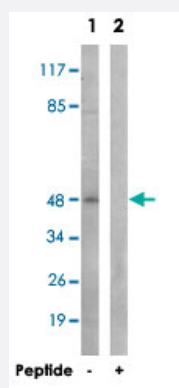


# TMEM237 polyclonal antibody

Catalog # PAB17607      Size 100 ug

## Applications



### Western Blot (Cell lysate)

Western blot analysis of extracts from Jurkat cells, using TMEM237 polyclonal antibody (Cat # PAB17607).

Peptide "+" means "with peptide blocking".

## Specification

**Product Description** Rabbit polyclonal antibody raised against synthetic peptide of TMEM237.

**Immunogen** A synthetic peptide corresponding to internal of human TMEM237.

**Host** Rabbit

**Reactivity** Human, Mouse

**Specificity** This antibody detects endogenous levels of total ALS2CR4 protein.

**Form** Liquid

**Recommend Usage** Western Blot (1:500-1:1000)  
ELISA (1:40000)  
The optimal working dilution should be determined by the end user.

**Storage Buffer** In PBS, pH 7.4 (150mM NaCl, 0.02% sodium azide, 50% glycerol)

**Storage Instruction** Store at -20°C.  
Aliquot to avoid repeated freezing and thawing.

**Note**

This product contains sodium azide: a POISONOUS AND HAZARDOUS SUBSTANCE which should be handled by trained staff only.

## Applications

- Western Blot (Cell lysate)

Western blot analysis of extracts from Jurkat cells, using TMEM237 polyclonal antibody (Cat # PAB17607).  
Peptide "+" means "with peptide blocking".

- Enzyme-linked Immunoabsorbent Assay

## Gene Info — TMEM237

Entrez GeneID	<a href="#">65062</a>
---------------	-----------------------

Protein Accession#	<a href="#">Q96Q45</a>
--------------------	------------------------

Gene Name	TMEM237
-----------	---------

Gene Alias	DKFZp313L091, FLJ33282
------------	------------------------

Gene Description	amyotrophic lateral sclerosis 2 (juvenile) chromosome region, candidate 4
------------------	---

Gene Ontology	<a href="#">Hyperlink</a>
---------------	---------------------------

Gene Summary	O
--------------	---

Other Designations	ALS2CR4 protein, N-terminus truncated
--------------------	---------------------------------------