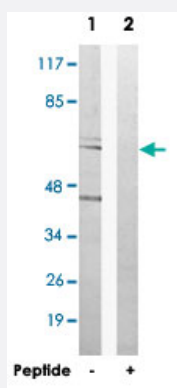


# APBA3 polyclonal antibody

Catalog # PAB17606      Size 100 ug

## Applications



### Western Blot (Cell lysate)

Western blot analysis of extracts from HUVEC cells, using APBA3 polyclonal antibody (Cat # PAB17606).

Peptide "+" means "with peptide blocking".

## Specification

|                            |  |
|----------------------------|--|
| <b>Product Description</b> | Rabbit polyclonal antibody raised against synthetic peptide of APBA3.  |
| <b>Immunogen</b>           | A synthetic peptide corresponding to internal of human APBA3.  |
| <b>Host</b>                | Rabbit   |
| <b>Reactivity</b>          | Human  |
| <b>Specificity</b>         | This antibody detects endogenous levels of total APBA3 protein.  |
| <b>Form</b>                | Liquid   |
| <b>Recommend Usage</b>     | Western Blot (1:500-1:1000)<br>ELISA (1:40000)<br>The optimal working dilution should be determined by the end user. |
| <b>Storage Buffer</b>      | In PBS, pH 7.4 (150mM NaCl, 0.02% sodium azide, 50% glycerol)  |
| <b>Storage Instruction</b> | Store at -20°C.<br>Aliquot to avoid repeated freezing and thawing.   |

**Note**

This product contains sodium azide: a POISONOUS AND HAZARDOUS SUBSTANCE which should be handled by trained staff only.

## Applications

- Western Blot (Cell lysate)

Western blot analysis of extracts from HUVEC cells, using APBA3 polyclonal antibody (Cat # PAB17606).  
Peptide "+" means "with peptide blocking".

- Enzyme-linked Immunoabsorbent Assay

## Gene Info — APBA3

Entrez GeneID [9546](#)

Protein Accession# [O96018](#)

Gene Name APBA3

Gene Alias MGC:15815, X11L2, mint3

Gene Description amyloid beta (A4) precursor protein-binding, family A, member 3

Omim ID [604262](#)

Gene Ontology [Hyperlink](#)

**Gene Summary** The protein encoded by this gene is a member of the X11 protein family. It is an adapter protein that interacts with the Alzheimer's disease amyloid precursor protein. This gene product is believed to be involved in signal transduction processes. This gene is a candidate gene for Alzheimer's disease. [provided by RefSeq]

**Other Designations** X11-like 2 protein|adapter protein X11gamma|amyloid beta (A4) precursor protein-binding, family A, member 3 (X11-like 2)|neuron-specific X11L2 protein|neuronal munc18-1-interacting protein 3|phosphotyrosine-binding/-interacting domain (PTB)-bearing protein

## Disease

- [Genetic Predisposition to Disease](#)
- [Narcolepsy](#)