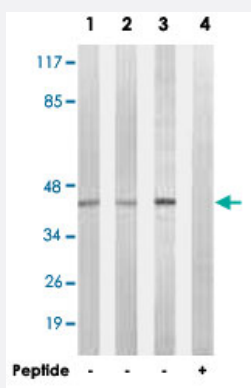


SGCA polyclonal antibody

Catalog # PAB17604 Size 100 ug

Applications



Western Blot (Cell lysate)

Western blot analysis of extracts from Jurkat cells (Lane 1), HepG2 cells (Lane 2) and HeLa cells (Lane 3 and lane 4), using SGCA polyclonal antibody (Cat # PAB17604).

Peptide "+" means "with peptide blocking".

Specification

Product Description	Rabbit polyclonal antibody raised against synthetic peptide of SGCA.
Immunogen	A synthetic peptide corresponding to internal of human SGCA.
Host	Rabbit
Reactivity	Human, Mouse
Specificity	This antibody detects endogenous levels of total SGCA protein.
Form	Liquid
Recommend Usage	Western Blot (1:500-1:1000) ELISA (1:40000) The optimal working dilution should be determined by the end user.
Storage Buffer	In PBS, pH 7.4 (150mM NaCl, 0.02% sodium azide, 50% glycerol)
Storage Instruction	Store at -20°C. Aliquot to avoid repeated freezing and thawing.

Note

This product contains sodium azide: a POISONOUS AND HAZARDOUS SUBSTANCE which should be handled by trained staff only.

Applications

- Western Blot (Cell lysate)

Western blot analysis of extracts from Jurkat cells (Lane 1), HepG2 cells (Lane 2) and HeLa cells (Lane 3 and lane 4), using SGCA polyclonal antibody (Cat # PAB17604).
Peptide "+" means "with peptide blocking".

- Enzyme-linked Immunoabsorbent Assay

Gene Info — SGCA

Entrez GeneID	6442
---------------	----------------------

Protein Accession#	Q16586
--------------------	------------------------

Gene Name	SGCA
-----------	------

Gene Alias	50-DAG, A2, ADL, DAG2, DMDA2, LGMD2D, SCARMD1, adhalin
------------	--

Gene Description	sarcoglycan, alpha (50kDa dystrophin-associated glycoprotein)
------------------	---

Omim ID	600119 608099
---------	---

Gene Ontology	Hyperlink
---------------	---------------------------

Gene Summary	This gene encodes a component of the dystrophin-glycoprotein complex (DGC), which is critical to the stability of muscle fiber membranes and to the linking of the actin cytoskeleton to the extracellular matrix. Its expression is thought to be restricted to striated muscle. Mutations in this gene result in type 2D autosomal recessive limb-girdle muscular dystrophy. Multiple transcript variants encoding different isoforms have been found for this gene. [provided by RefSeq]
--------------	---

Other Designations	50kD DAG sarcoglycan, alpha
--------------------	-----------------------------

Pathway

- [Arrhythmogenic right ventricular cardiomyopathy \(ARVC\)](#)
- [Hypertrophic cardiomyopathy \(HCM\)](#)