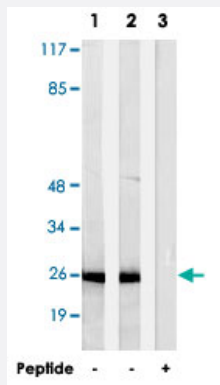


AKR1E2 polyclonal antibody

Catalog # PAB17600 Size 100 ug

Applications



Western Blot (Cell lysate)

Western blot analysis of extracts from HepG2 cells (Lane 1 and lane 3) and Jurkat cells (Lane 2), using AKR1E2 polyclonal antibody (Cat # PAB17600). Peptide "+" means "with peptide blocking".

Specification

Product Description	Rabbit polyclonal antibody raised against synthetic peptide of AKR1E2.
Immunogen	A synthetic peptide corresponding to internal of human AKR1E2.
Host	Rabbit
Reactivity	Human
Specificity	This antibody detects endogenous levels of total AKR1E2 protein.
Form	Liquid
Recommend Usage	Western Blot (1:500-1:1000) ELISA (1:10000) The optimal working dilution should be determined by the end user.
Storage Buffer	In PBS, pH 7.4 (150mM NaCl, 0.02% sodium azide, 50% glycerol)
Storage Instruction	Store at -20°C. Aliquot to avoid repeated freezing and thawing.

Note

This product contains sodium azide: a POISONOUS AND HAZARDOUS SUBSTANCE which should be handled by trained staff only.

Applications

- Western Blot (Cell lysate)

Western blot analysis of extracts from HepG2 cells (Lane 1 and lane 3) and Jurkat cells (Lane 2), using AKR1E2 polyclonal antibody (Cat # PAB17600).

Peptide "+" means "with peptide blocking".

- Enzyme-linked Immunoabsorbent Assay

Gene Info — AKR1CL2

Entrez GeneID	83592
Protein Accession#	Q96JD6
Gene Name	AKR1CL2
Gene Alias	AKRDC1, LoopADR, MGC10612
Gene Description	aldo-keto reductase family 1, member C-like 2
Gene Ontology	Hyperlink
Gene Summary	O
Other Designations	OTTHUMP00000018991 aldo-keto reductase loopADR aldo-keto reductase related protein

Disease

- [Alzheimer Disease](#)
- [Genetic Predisposition to Disease](#)