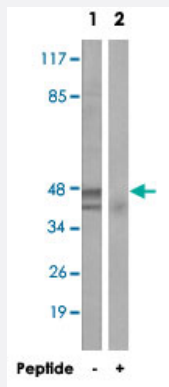


ACOT1 polyclonal antibody

Catalog # PAB17593 Size 100 ug

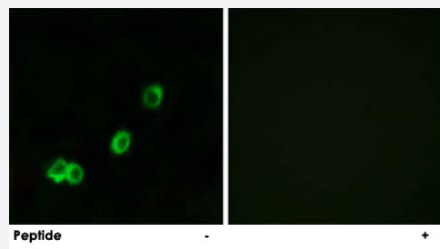
Applications



Western Blot (Cell lysate)

Western blot analysis of extracts from Jurkat cells, using ACOT1 polyclonal antibody (Cat # PAB17593).

Peptide "+" means "with peptide blocking".



Immunofluorescence

Immunofluorescence analysis of MCF-7 cells, using ACOT1 polyclonal antibody (Cat # PAB17593).

Peptide "+" means "with peptide blocking".

Specification

Product Description	Rabbit polyclonal antibody raised against synthetic peptide of ACOT1.
Immunogen	A synthetic peptide corresponding to internal of human ACOT1.
Host	Rabbit
Reactivity	Human
Specificity	This antibody detects endogenous levels of total ACOT1 protein.
Form	Liquid

Recommend Usage	Western Blot (1:500-1:1000) Immunofluorescence (1:500-1:1000) ELISA (1:40000) The optimal working dilution should be determined by the end user.
Storage Buffer	In PBS, pH 7.4 (150mM NaCl, 0.02% sodium azide, 50% glycerol)
Storage Instruction	Store at -20°C. Aliquot to avoid repeated freezing and thawing.
Note	This product contains sodium azide: a POISONOUS AND HAZARDOUS SUBSTANCE which should be handled by trained staff only.

Applications

- Western Blot (Cell lysate)

Western blot analysis of extracts from Jurkat cells, using ACOT1 polyclonal antibody (Cat # PAB17593).
Peptide "+" means "with peptide blocking".

- Immunofluorescence

Immunofluorescence analysis of MCF-7 cells, using ACOT1 polyclonal antibody (Cat # PAB17593).
Peptide "+" means "with peptide blocking".

- Enzyme-linked Immunoabsorbent Assay

Gene Info — ACOT1

Entrez GeneID	641371
Protein Accession#	Q86TX2
Gene Name	ACOT1
Gene Alias	ACH2, CTE-1, LACH2
Gene Description	acyl-CoA thioesterase 1
Gene Ontology	Hyperlink
Other Designations	-

Pathway

- [Biosynthesis of unsaturated fatty acids](#)