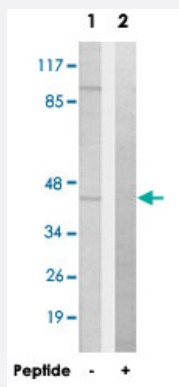


# EPHX4 polyclonal antibody

Catalog # PAB17588

Size 100 ug

## Applications



### Western Blot (Cell lysate)

Western blot analysis of extracts from HT-29 cells, using EPX4 polyclonal antibody (Cat # PAB17588).

Peptide "+" means "with peptide blocking".

## Specification

**Product Description** Rabbit polyclonal antibody raised against synthetic peptide of EPX4.

**Immunogen** A synthetic peptide corresponding to internal of human EPX4.

**Host** Rabbit

**Reactivity** Human, Mouse

**Specificity** This antibody detects endogenous levels of total EPX4 protein.

**Form** Liquid

**Recommend Usage** Western Blot (1:500-1:1000)  
ELISA (1:40000)  
The optimal working dilution should be determined by the end user.

**Storage Buffer** In PBS, pH 7.4 (150mM NaCl, 0.02% sodium azide, 50% glycerol)

**Storage Instruction** Store at -20°C.  
Aliquot to avoid repeated freezing and thawing.

**Note**

This product contains sodium azide: a POISONOUS AND HAZARDOUS SUBSTANCE which should be handled by trained staff only.

## Applications

- Western Blot (Cell lysate)

Western blot analysis of extracts from HT-29 cells, using EPHX4 polyclonal antibody (Cat # PAB17588).  
Peptide "+" means "with peptide blocking".

- Enzyme-linked Immunoabsorbent Assay

## Gene Info — ABHD7

Entrez GeneID	<a href="#">253152</a>
Protein Accession#	<a href="#">Q8IUS5</a>
Gene Name	ABHD7
Gene Alias	EPHXR, FLJ90341
Gene Description	abhydrolase domain containing 7
Gene Ontology	<a href="#">Hyperlink</a>
Other Designations	OTTHUMP00000011814

## Disease

- [DNA Damage](#)
- [Genetic Predisposition to Disease](#)