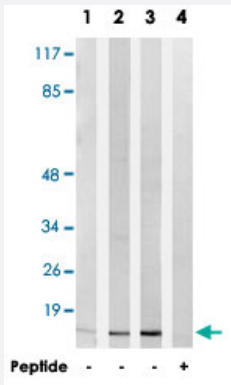


RPL30 polyclonal antibody

Catalog # PAB17582 Size 100 ug

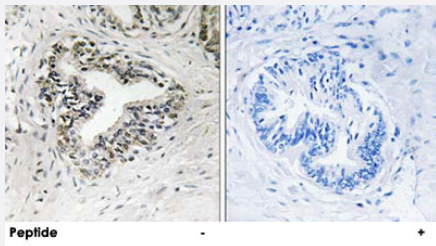
Applications



Western Blot (Cell lysate)

Western blot analysis of extracts from A-549 cells (Lane 1), COS-7 cells (Lane 2) and RAW 264.7 cells (Lane 3 and lane 4), using RPL30 polyclonal antibody (Cat # PAB17582).

Peptide "+" means "with peptide blocking".



Immunohistochemistry (Formalin/PFA-fixed paraffin-embedded sections)

Immunohistochemistry analysis of paraffin-embedded human prostate carcinoma tissue using RPL30 polyclonal antibody (Cat # PAB17582).

Peptide "+" means "with peptide blocking".

Specification

Product Description	Rabbit polyclonal antibody raised against synthetic peptide of RPL30.
Immunogen	A synthetic peptide corresponding to internal of human RPL30.
Host	Rabbit
Reactivity	Human, Mouse, Rat
Specificity	This antibody detects endogenous levels of total RPL30 protein.
Form	Liquid

Recommend Usage	Western Blot (1:500-1:1000) Immunohistochemistry (1:50-1:100) ELISA (1:40000) The optimal working dilution should be determined by the end user.
Storage Buffer	In PBS, pH 7.4 (150mM NaCl, 0.02% sodium azide, 50% glycerol)
Storage Instruction	Store at -20°C. Aliquot to avoid repeated freezing and thawing.
Note	This product contains sodium azide: a POISONOUS AND HAZARDOUS SUBSTANCE which should be handled by trained staff only.

Applications

- Western Blot (Cell lysate)

Western blot analysis of extracts from A-549 cells (Lane 1), COS-7 cells (Lane 2) and RAW 264.7 cells (Lane 3 and lane 4), using RPL30 polyclonal antibody (Cat # PAB17582).
Peptide "+" means "with peptide blocking".

- Immunohistochemistry (Formalin/PFA-fixed paraffin-embedded sections)

Immunohistochemistry analysis of paraffin-embedded human prostate carcinoma tissue using RPL30 polyclonal antibody (Cat # PAB17582).
Peptide "+" means "with peptide blocking".

- Enzyme-linked Immunoabsorbent Assay

Gene Info — RPL30

Entrez GeneID	6156
Protein Accession#	P62888
Gene Name	RPL30
Gene Alias	-
Gene Description	ribosomal protein L30
Omim ID	180467
Gene Ontology	Hyperlink

Gene Summary

Ribosomes, the organelles that catalyze protein synthesis, consist of a small 40S subunit and a large 60S subunit. Together these subunits are composed of 4 RNA species and approximately 80 structurally distinct proteins. This gene encodes a ribosomal protein that is a component of the 60S subunit. The protein belongs to the L30E family of ribosomal proteins. It is located in the cytoplasm. This gene is co-transcribed with the U72 small nucleolar RNA gene, which is located in its fourth intron. As is typical for genes encoding ribosomal proteins, there are multiple processed pseudogenes of this gene dispersed through the genome. [provided by RefSeq]

Other Designations

60S ribosomal protein L30

Pathway

- [Ribosome](#)