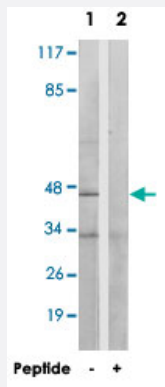


RPL3 polyclonal antibody

Catalog # PAB17581

Size 100 ug

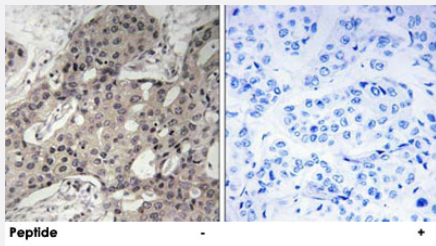
Applications



Western Blot (Cell lysate)

Western blot analysis of extracts from HT-29 cells, using RPL3 polyclonal antibody (Cat # PAB17581).

Peptide "+" means "with peptide blocking".



Immunohistochemistry (Formalin/PFA-fixed paraffin-embedded sections)

Immunohistochemistry analysis of paraffin-embedded human breast carcinoma tissue using RPL3 polyclonal antibody (Cat # PAB17581).

Peptide "+" means "with peptide blocking".

Specification

Product Description Rabbit polyclonal antibody raised against synthetic peptide of RPL3.

Immunogen A synthetic peptide corresponding to internal of human RPL3.

Host Rabbit

Reactivity Human, Mouse, Rat

Specificity This antibody detects endogenous levels of total RPL3 protein.

Form Liquid

Recommend Usage	Western Blot (1:500-1:1000) Immunohistochemistry (1:50-1:100) ELISA (1:5000) The optimal working dilution should be determined by the end user.
Storage Buffer	In PBS, pH 7.4 (150mM NaCl, 0.02% sodium azide, 50% glycerol)
Storage Instruction	Store at -20°C. Aliquot to avoid repeated freezing and thawing.
Note	This product contains sodium azide: a POISONOUS AND HAZARDOUS SUBSTANCE which should be handled by trained staff only.

Applications

- Western Blot (Cell lysate)

Western blot analysis of extracts from HT-29 cells, using RPL3 polyclonal antibody (Cat # PAB17581).
Peptide "+" means "with peptide blocking".

- Immunohistochemistry (Formalin/PFA-fixed paraffin-embedded sections)

Immunohistochemistry analysis of paraffin-embedded human breast carcinoma tissue using RPL3 polyclonal antibody (Cat # PAB17581).
Peptide "+" means "with peptide blocking".

- Enzyme-linked Immunoabsorbent Assay

Gene Info — RPL3

Entrez GeneID	6122
Protein Accession#	P39023
Gene Name	RPL3
Gene Alias	MGC104284, TARBP-B
Gene Description	ribosomal protein L3
Omim ID	604163
Gene Ontology	Hyperlink

Gene Summary

Ribosomes, the complexes that catalyze protein synthesis, consist of a small 40S subunit and a large 60S subunit. Together these subunits are composed of 4 RNA species and approximately 80 structurally distinct proteins. This gene encodes a ribosomal protein that is a component of the 60S subunit. The protein belongs to the L3P family of ribosomal proteins and it is located in the cytoplasm. The protein can bind to the HIV-1 TAR mRNA, and it has been suggested that the protein contributes to tat-mediated transactivation. This gene is co-transcribed with several small nucleolar RNA genes, which are located in several of this gene's introns. Alternate transcriptional splice variants, encoding different isoforms, have been characterized. As is typical for genes encoding ribosomal proteins, there are multiple processed pseudogenes of this gene dispersed through the genome. [provided by RefSeq]

Other Designations

60S ribosomal protein L3|HIV-1 TAR RNA-binding protein B|OTTHUMP00000028935|ribosomal protein L3, isoform a

Pathway

- [Ribosome](#)