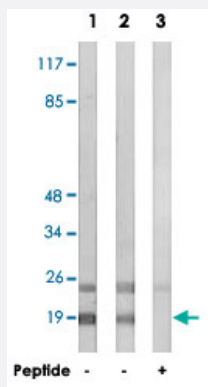


# RPL12 polyclonal antibody

Catalog # PAB17579

Size 100 ug

## Applications



### Western Blot (Cell lysate)

Western blot analysis of extracts from HepG2 cells (Lane 1 and lane 3) and HeLa cells (Lane 2), using RPL12 polyclonal antibody (Cat # PAB17579). Peptide "+" means "with peptide blocking".

## Specification

<b>Product Description</b>	Rabbit polyclonal antibody raised against synthetic peptide of RPL12.
<b>Immunogen</b>	A synthetic peptide corresponding to internal of human RPL12.
<b>Host</b>	Rabbit
<b>Reactivity</b>	Human, Mouse
<b>Specificity</b>	This antibody detects endogenous levels of total RPL12 protein.
<b>Form</b>	Liquid
<b>Recommend Usage</b>	Western Blot (1:500-1:1000) ELISA (1:40000) The optimal working dilution should be determined by the end user.
<b>Storage Buffer</b>	In PBS, pH 7.4 (150mM NaCl, 0.02% sodium azide, 50% glycerol)
<b>Storage Instruction</b>	Store at -20°C. Aliquot to avoid repeated freezing and thawing.

**Note**

This product contains sodium azide: a POISONOUS AND HAZARDOUS SUBSTANCE which should be handled by trained staff only.

## Applications

- Western Blot (Cell lysate)

Western blot analysis of extracts from HepG2 cells (Lane 1 and lane 3) and HeLa cells (Lane 2), using RPL12 polyclonal antibody (Cat # PAB17579).

Peptide "+" means "with peptide blocking".

- Enzyme-linked Immunoabsorbent Assay

## Gene Info — RPL12

Entrez GeneID	<a href="#">6136</a>
---------------	----------------------

Protein Accession#	<a href="#">P30050</a>
--------------------	------------------------

Gene Name	RPL12
-----------	-------

Gene Alias	-
------------	---

Gene Description	ribosomal protein L12
------------------	-----------------------

Omim ID	<a href="#">180475</a>
---------	------------------------

Gene Ontology	<a href="#">Hyperlink</a>
---------------	---------------------------

Gene Summary	<p>Ribosomes, the organelles that catalyze protein synthesis, consist of a small 40S subunit and a large 60S subunit. Together these subunits are composed of 4 RNA species and approximately 80 structurally distinct proteins. This gene encodes a ribosomal protein that is a component of the 60S subunit. The protein belongs to the L11P family of ribosomal proteins. It is located in the cytoplasm. The protein binds directly to the 26S rRNA. This gene is co-transcribed with the U65 snoRNA, which is located in its fourth intron. As is typical for genes encoding ribosomal proteins, there are multiple processed pseudogenes of this gene dispersed through the genome. [provided by RefSeq]</p>
--------------	--

Other Designations	60S ribosomal protein L12 OTTHUMP00000022186
--------------------	--

## Pathway

- [Ribosome](#)

## Disease

- [Cleft Lip](#)
- [Cleft Palate](#)