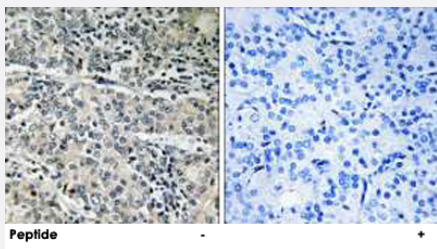


# C14orf2 polyclonal antibody

Catalog # PAB17578

Size 100 ug

## Applications



### Immunohistochemistry (Formalin/PFA-fixed paraffin-embedded sections)

Immunohistochemistry analysis of paraffin-embedded human prostate carcinoma tissue using C14orf2 polyclonal antibody (Cat # PAB17578). Peptide "+" means "with peptide blocking".

## Specification

<b>Product Description</b>	Rabbit polyclonal antibody raised against synthetic peptide of C14orf2.
<b>Immunogen</b>	A synthetic peptide corresponding to internal of human C14orf2.
<b>Host</b>	Rabbit
<b>Reactivity</b>	Human, Mouse
<b>Specificity</b>	This antibody detects endogenous levels of total C14orf2 protein.
<b>Form</b>	Liquid
<b>Recommend Usage</b>	Immunohistochemistry (1:50-1:100) ELISA (1:40000) The optimal working dilution should be determined by the end user.
<b>Storage Buffer</b>	In PBS, pH 7.4 (150mM NaCl, 0.02% sodium azide, 50% glycerol)
<b>Storage Instruction</b>	Store at -20°C. Aliquot to avoid repeated freezing and thawing.
<b>Note</b>	This product contains sodium azide: a POISONOUS AND HAZARDOUS SUBSTANCE which should be handled by trained staff only.

## Applications

- Immunohistochemistry (Formalin/PFA-fixed paraffin-embedded sections)

Immunohistochemistry analysis of paraffin-embedded human prostate carcinoma tissue using C14orf2 polyclonal antibody (Cat # PAB17578).

Peptide "+" means "with peptide blocking".

- Enzyme-linked Immunoabsorbent Assay

## Gene Info — C14orf2

Entrez GeneID	<a href="#">9556</a>
Protein Accession#	<a href="#">P56378</a>
Gene Name	C14orf2
Gene Alias	MP68, PLPM
Gene Description	chromosome 14 open reading frame 2
Omim ID	<a href="#">604573</a>
Gene Ontology	<a href="#">Hyperlink</a>
Other Designations	6.8 kDa mitochondrial proteolipid