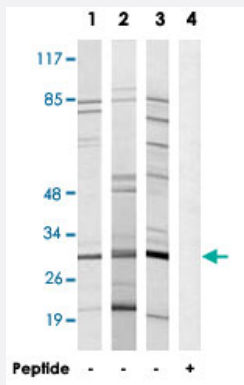


# RPS8 polyclonal antibody

Catalog # PAB17576      Size 100 ug

## Applications



### Western Blot (Cell lysate)

Western blot analysis of extracts from 293 cells (Lane 1), COLO cells (Lane 2) and A-549 cells (Lane 3 and lane 4), using RPS8 polyclonal antibody (Cat # PAB17576).

Peptide "+" means "with peptide blocking".

## Specification

<b>Product Description</b>	Rabbit polyclonal antibody raised against synthetic peptide of RPS8.
<b>Immunogen</b>	A synthetic peptide corresponding to internal of human RPS8.
<b>Host</b>	Rabbit
<b>Reactivity</b>	Human, Mouse, Rat
<b>Specificity</b>	This antibody detects endogenous levels of total RPS8 protein.
<b>Form</b>	Liquid
<b>Recommend Usage</b>	Western Blot (1:500-1:1000) ELISA (1:10000) The optimal working dilution should be determined by the end user.
<b>Storage Buffer</b>	In PBS, pH 7.4 (150mM NaCl, 0.02% sodium azide, 50% glycerol)
<b>Storage Instruction</b>	Store at -20°C. Aliquot to avoid repeated freezing and thawing.

**Note**

This product contains sodium azide: a POISONOUS AND HAZARDOUS SUBSTANCE which should be handled by trained staff only.

## Applications

- Western Blot (Cell lysate)

Western blot analysis of extracts from 293 cells (Lane 1), COLO cells (Lane 2) and A-549 cells (Lane 3 and lane 4), using RPS8 polyclonal antibody (Cat # PAB17576).

Peptide "+" means "with peptide blocking".

- Enzyme-linked Immunoabsorbent Assay

## Gene Info — RPS8

Entrez GeneID [6202](#)

Protein Accession# [P62241](#)

Gene Name RPS8

Gene Alias -

Gene Description ribosomal protein S8

Omim ID [600357](#)

Gene Ontology [Hyperlink](#)

**Gene Summary** Ribosomes, the organelles that catalyze protein synthesis, consist of a small 40S subunit and a large 60S subunit. Together these subunits are composed of 4 RNA species and approximately 80 structurally distinct proteins. This gene encodes a ribosomal protein that is a component of the 40 S subunit. The protein belongs to the S8E family of ribosomal proteins. It is located in the cytoplasm. Increased expression of this gene in colorectal tumors and colon polyps compared to matched normal colonic mucosa has been observed. This gene is co-transcribed with the small nucleolar RNA genes U38A, U38B, U39, and U40, which are located in its fourth, fifth, first, and second introns, respectively. As is typical for genes encoding ribosomal proteins, there are multiple processed pseudogenes of this gene dispersed through the genome. [provided by RefSeq]

**Other Designations** 40S ribosomal protein S8|OK/SW-cl.83

## Pathway

- [Ribosome](#)