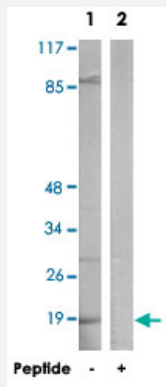


RPS27L polyclonal antibody

Catalog # PAB17572 Size 100 ug

Applications



Western Blot (Cell lysate)

Western blot analysis of extracts from COLO 205 cells, using RPS27L polyclonal antibody (Cat # PAB17572).

Peptide "+" means "with peptide blocking".

Specification

Product Description	Rabbit polyclonal antibody raised against synthetic peptide of RPS27L.
Immunogen	A synthetic peptide corresponding to N-terminus of human RPS27L.
Host	Rabbit
Reactivity	Human, Mouse
Specificity	This antibody detects endogenous levels of total RS27L protein.
Form	Liquid
Recommend Usage	Western Blot (1:500-1:1000) ELISA (1:10000) The optimal working dilution should be determined by the end user.
Storage Buffer	In PBS, pH 7.4 (150mM NaCl, 0.02% sodium azide, 50% glycerol)
Storage Instruction	Store at -20°C. Aliquot to avoid repeated freezing and thawing.

Note

This product contains sodium azide: a POISONOUS AND HAZARDOUS SUBSTANCE which should be handled by trained staff only.

Applications

- Western Blot (Cell lysate)

Western blot analysis of extracts from COLO 205 cells, using RPS27L polyclonal antibody (Cat # PAB17572).

Peptide "+" means "with peptide blocking".

- Enzyme-linked Immunoabsorbent Assay

Gene Info — RPS27L

Entrez GeneID	51065
---------------	-----------------------

Protein Accession#	Q71UM5
--------------------	------------------------

Gene Name	RPS27L
-----------	--------

Gene Alias	-
------------	---

Gene Description	ribosomal protein S27-like
------------------	----------------------------

Gene Ontology	Hyperlink
---------------	---------------------------

Gene Summary	This gene encodes a protein sharing 96% amino acid similarity with ribosomal protein S27, which suggests the encoded protein may be a component of the 40S ribosomal subunit. [provided by RefSeq]
--------------	--

Other Designations	40S ribosomal protein S27-like
--------------------	--------------------------------