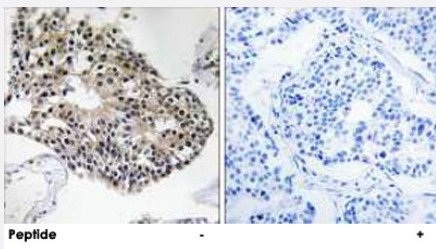


# RPS25 polyclonal antibody

Catalog # PAB17571      Size 100 ug

## Applications



### Immunohistochemistry (Formalin/PFA-fixed paraffin-embedded sections)

Immunohistochemistry analysis of paraffin-embedded human breast carcinoma tissue using RPS25 polyclonal antibody (Cat # PAB17571).

Peptide "+" means "with peptide blocking".

## Specification

<b>Product Description</b>	Rabbit polyclonal antibody raised against synthetic peptide of RPS25.
<b>Immunogen</b>	A synthetic peptide corresponding to internal of human RPS25.
<b>Host</b>	Rabbit
<b>Reactivity</b>	Human, Mouse, Rat
<b>Specificity</b>	This antibody detects endogenous levels of total RPS25 protein.
<b>Form</b>	Liquid
<b>Recommend Usage</b>	Immunohistochemistry (1:50-1:100) ELISA (1:40000) The optimal working dilution should be determined by the end user.
<b>Storage Buffer</b>	In PBS, pH 7.4 (150mM NaCl, 0.02% sodium azide, 50% glycerol)
<b>Storage Instruction</b>	Store at -20°C. Aliquot to avoid repeated freezing and thawing.
<b>Note</b>	This product contains sodium azide: a POISONOUS AND HAZARDOUS SUBSTANCE which should be handled by trained staff only.

## Applications

- Immunohistochemistry (Formalin/PFA-fixed paraffin-embedded sections)

Immunohistochemistry analysis of paraffin-embedded human breast carcinoma tissue using RPS25 polyclonal antibody (Cat # PAB17571).

Peptide "+" means "with peptide blocking".

- Enzyme-linked Immunoabsorbent Assay

## Gene Info — RPS25

Entrez GeneID	<a href="#">6230</a>
Protein Accession#	<a href="#">P62851</a>
Gene Name	RPS25
Gene Alias	-
Gene Description	ribosomal protein S25
Omim ID	<a href="#">180465</a>
Gene Ontology	<a href="#">Hyperlink</a>
Gene Summary	Ribosomes, the organelles that catalyze protein synthesis, consist of a small 40S subunit and a large 60S subunit. Together these subunits are composed of 4 RNA species and approximately 80 structurally distinct proteins. This gene encodes a ribosomal protein that is a component of the 40 S subunit. The protein belongs to the S25E family of ribosomal proteins. It is located in the cytoplasm. As is typical for genes encoding ribosomal proteins, there are multiple processed pseudogenes of this gene dispersed through the genome. [provided by RefSeq]
Other Designations	40S ribosomal protein S25

## Pathway

- [Ribosome](#)