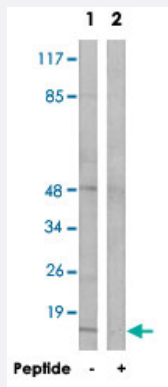


RPS12 polyclonal antibody

Catalog # PAB17569

Size 100 ug

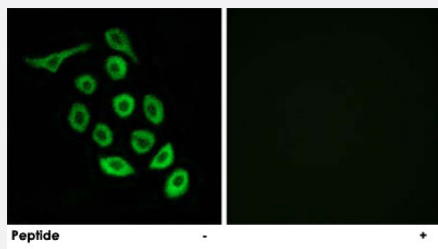
Applications



Western Blot (Cell lysate)

Western blot analysis of extracts from COLO 205 cells, using RPS12 polyclonal antibody (Cat # PAB17569).

Peptide "+" means "with peptide blocking".



Immunofluorescence

Immunofluorescence analysis of A-549 cells, using RPS12 polyclonal antibody (Cat # PAB17569).

Peptide "+" means "with peptide blocking".

Specification

Product Description	Rabbit polyclonal antibody raised against synthetic peptide of RPS12.
Immunogen	A synthetic peptide corresponding to C-terminus of human RPS12.
Host	Rabbit
Reactivity	Human, Mouse, Rat
Specificity	This antibody detects endogenous levels of total RPS12 protein.
Form	Liquid

Recommend Usage	Western Blot (1:500-1:1000) Immunofluorescence (1:500-1:1000) ELISA (1:40000) The optimal working dilution should be determined by the end user.
Storage Buffer	In PBS, pH 7.4 (150mM NaCl, 0.02% sodium azide, 50% glycerol)
Storage Instruction	Store at -20°C. Aliquot to avoid repeated freezing and thawing.
Note	This product contains sodium azide: a POISONOUS AND HAZARDOUS SUBSTANCE which should be handled by trained staff only.

Applications

- Western Blot (Cell lysate)

Western blot analysis of extracts from COLO 205 cells, using RPS12 polyclonal antibody (Cat # PAB17569).
Peptide "+" means "with peptide blocking".

- Immunofluorescence

Immunofluorescence analysis of A-549 cells, using RPS12 polyclonal antibody (Cat # PAB17569).
Peptide "+" means "with peptide blocking".

- Enzyme-linked Immunoabsorbent Assay

Gene Info — RPS12

Entrez GeneID	6206
Protein Accession#	P25398
Gene Name	RPS12
Gene Alias	-
Gene Description	ribosomal protein S12
Omim ID	603660
Gene Ontology	Hyperlink

Gene Summary

Ribosomes, the organelles that catalyze protein synthesis, consist of a small 40S subunit and a large 60S subunit. Together these subunits are composed of 4 RNA species and approximately 80 structurally distinct proteins. This gene encodes a ribosomal protein that is a component of the 40S subunit. The protein belongs to the S12E family of ribosomal proteins. It is located in the cytoplasm. Increased expression of this gene in colorectal cancers compared to matched normal colonic mucosa has been observed. As is typical for genes encoding ribosomal proteins, there are multiple processed pseudogenes of this gene dispersed through the genome. [provided by RefSeq]

Other Designations

40S ribosomal protein S12|OTTHUMP00000017230

Pathway

- [Ribosome](#)